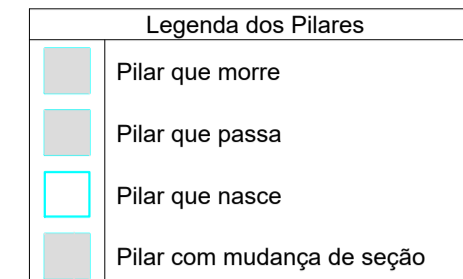


**PLANTA LOCAÇÃO FUNDAÇÃO**

Escala: 1:50

Vigas			
Nome	Seção (cm)	Elevação (cm)	Nível (cm)
V1	15x25	0	0
V2	15x25	0	0
V3	15x25	0	0
V4	15x25	0	0
V5	15x25	0	0
V6	15x25	0	0
V7	15x25	0	0
V8	15x25	0	0
V9	15x25	0	0
V10	15x25	0	0

Pilares			
Nome	Seção (cm)	Elevação (cm)	Nível (cm)
P1	15 x 24	0	0
P2	15 x 24	0	0
P3	15 x 24	0	0
P4	15 x 24	0	0
P5	19 x 19	0	0
P6	15 x 24	0	0
P7	19 x 19	0	0
P8	19 x 19	0	0
P9	20 x 20	0	0
P10	19 x 19	0	0



Características dos materiais	
f <sub>ck</sub> (kgf/cm <sup>2</sup> )	E <sub>cs</sub> (kgf/cm <sup>2</sup> )
250	238000

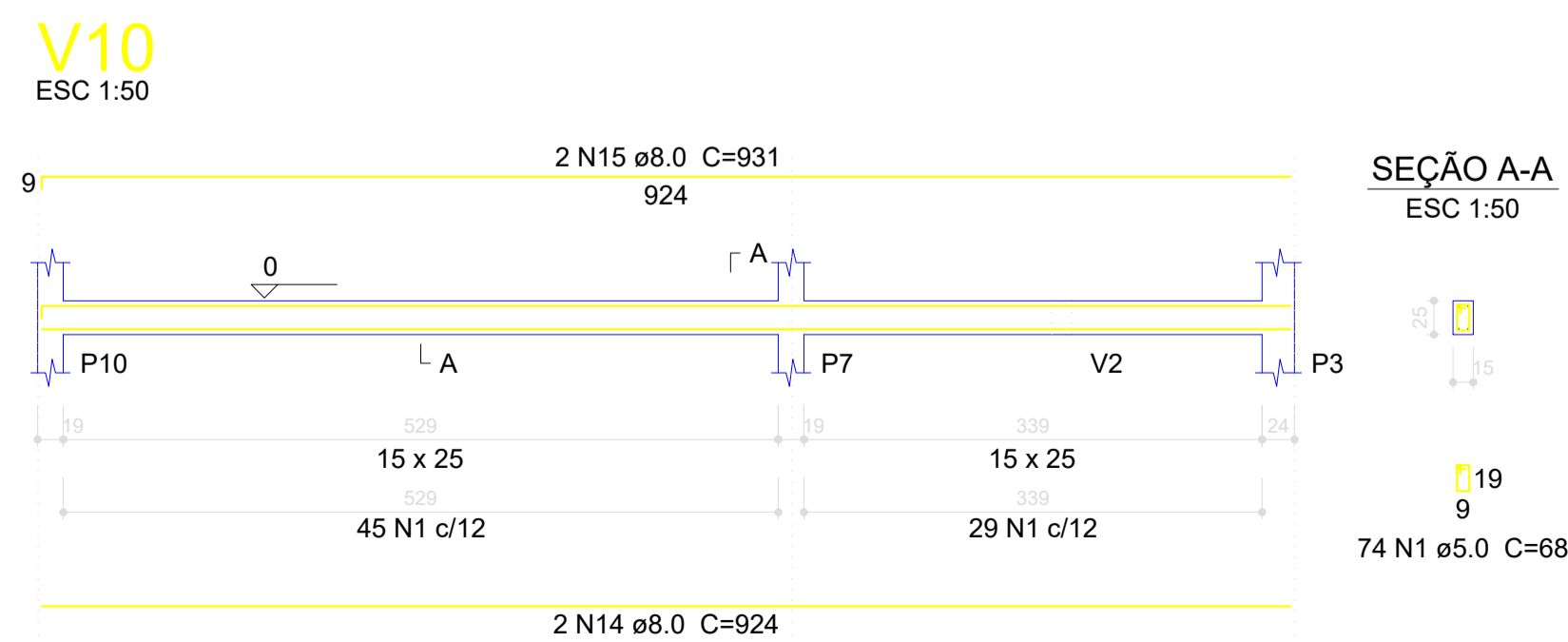
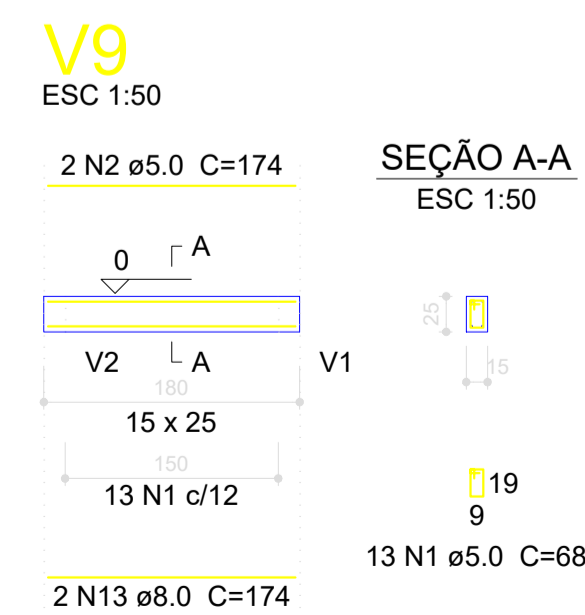
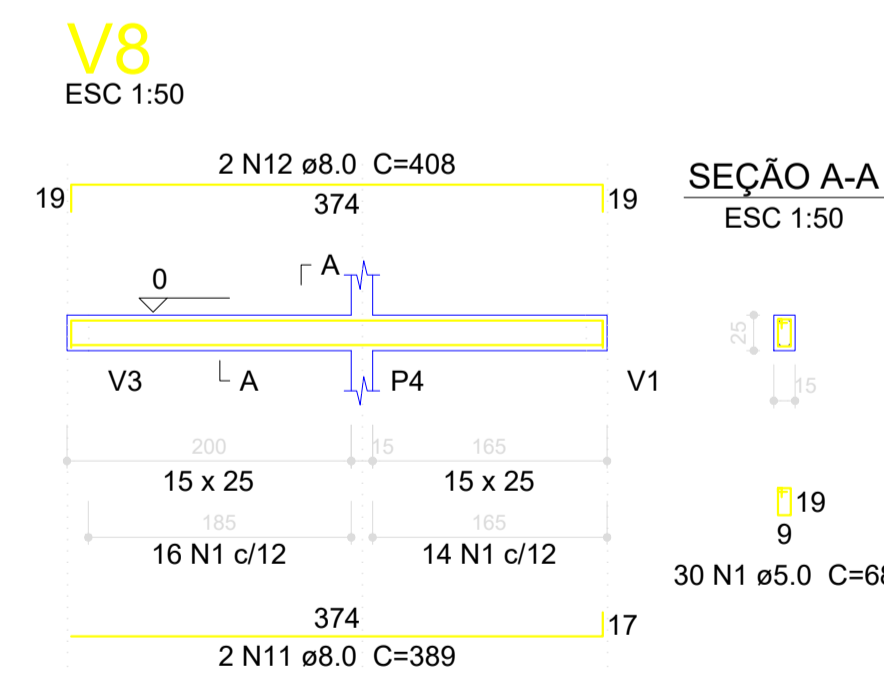
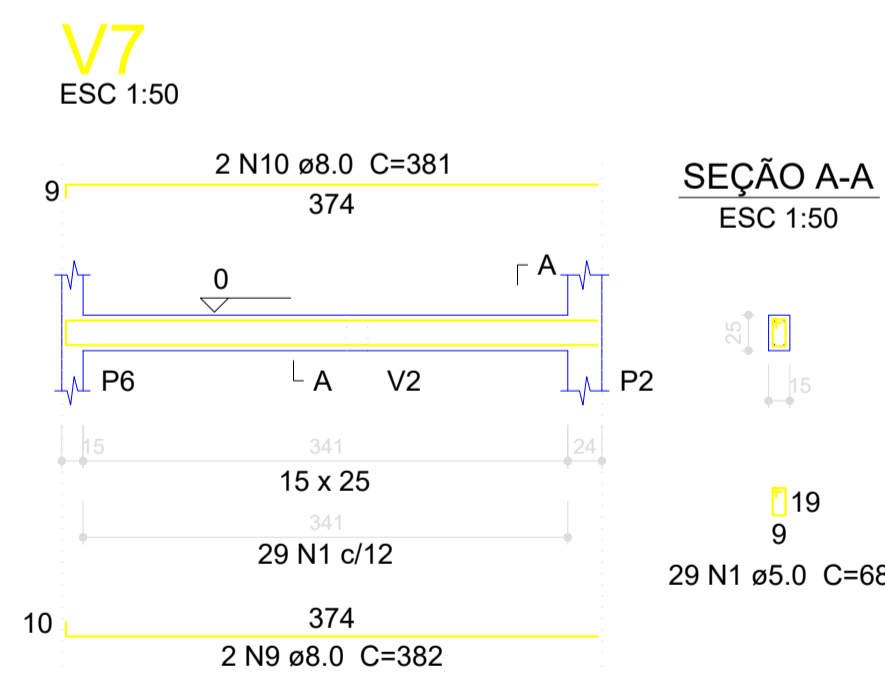
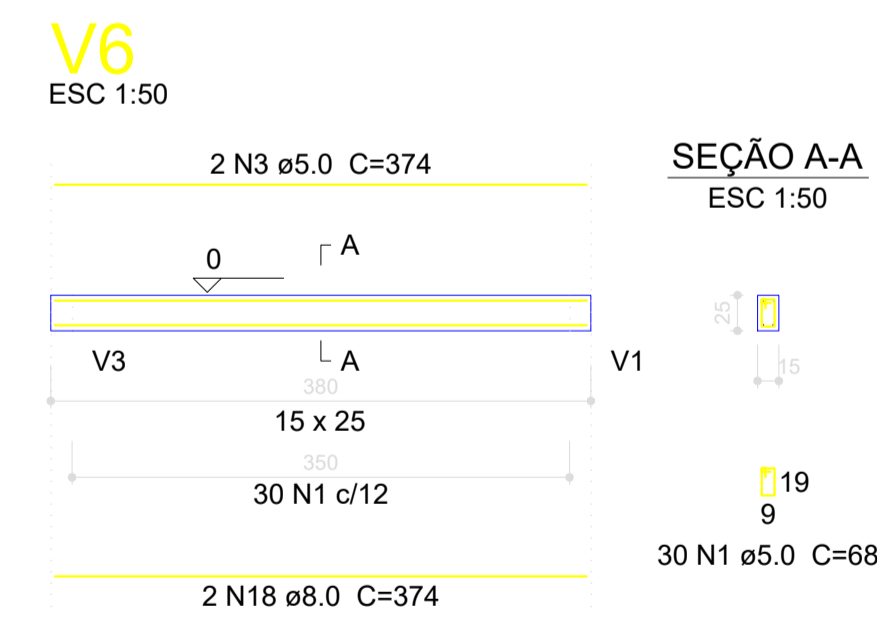
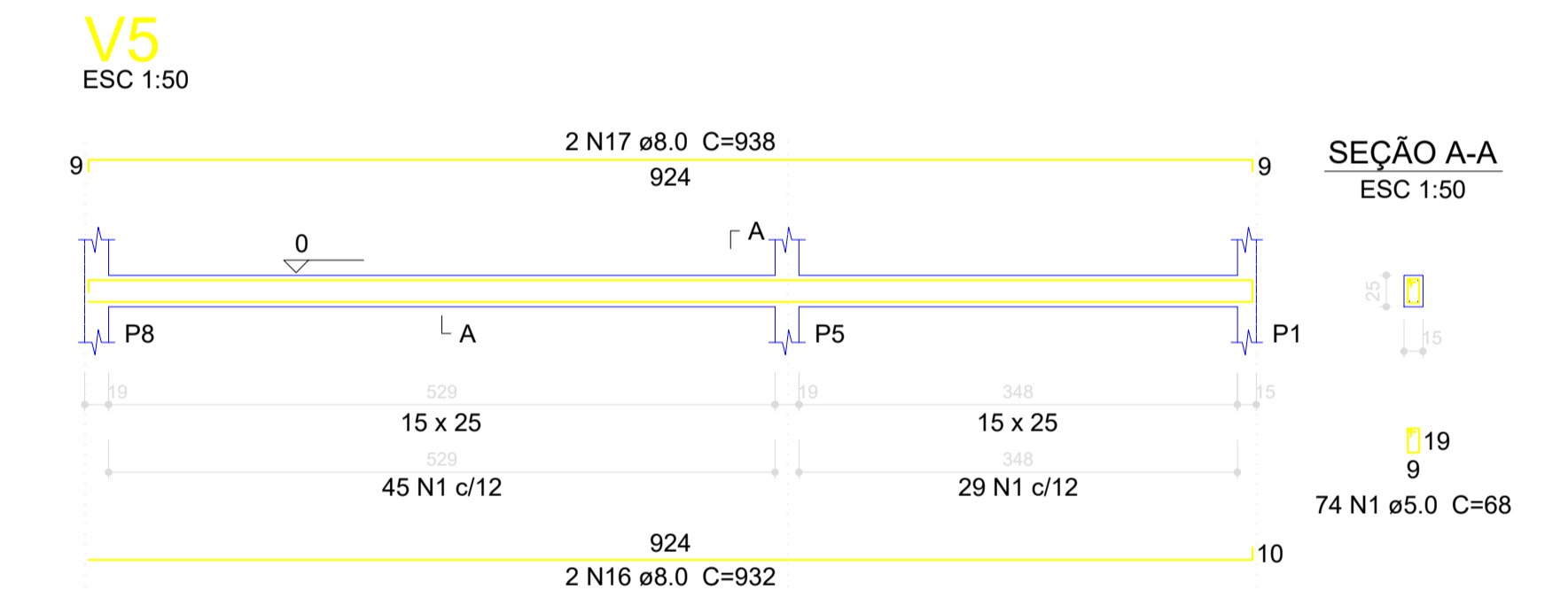
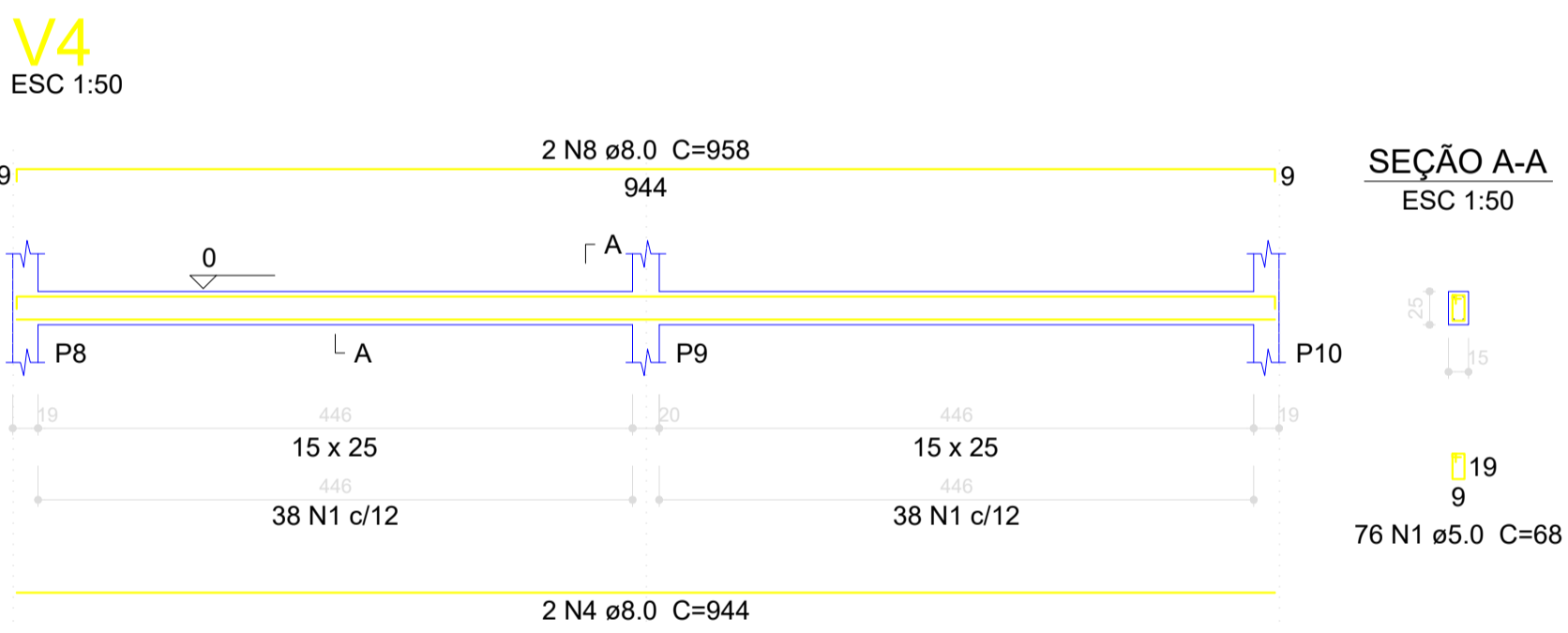
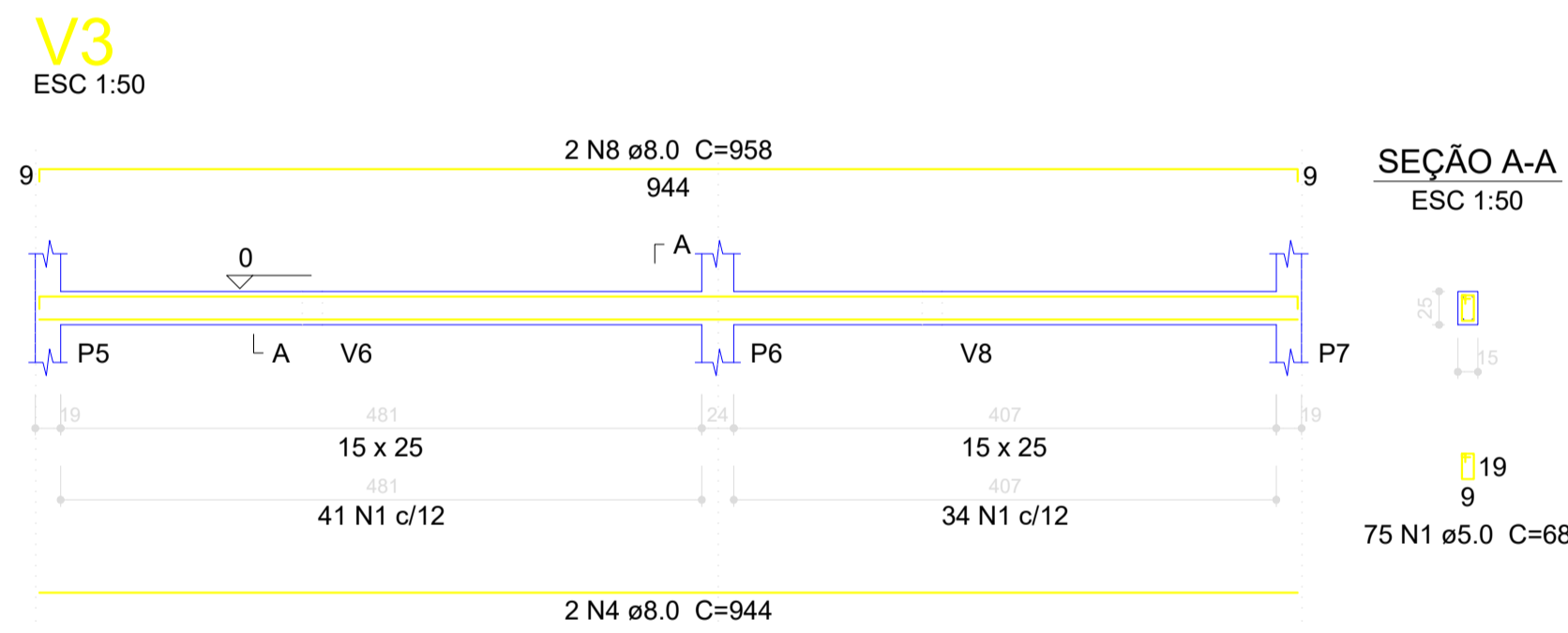
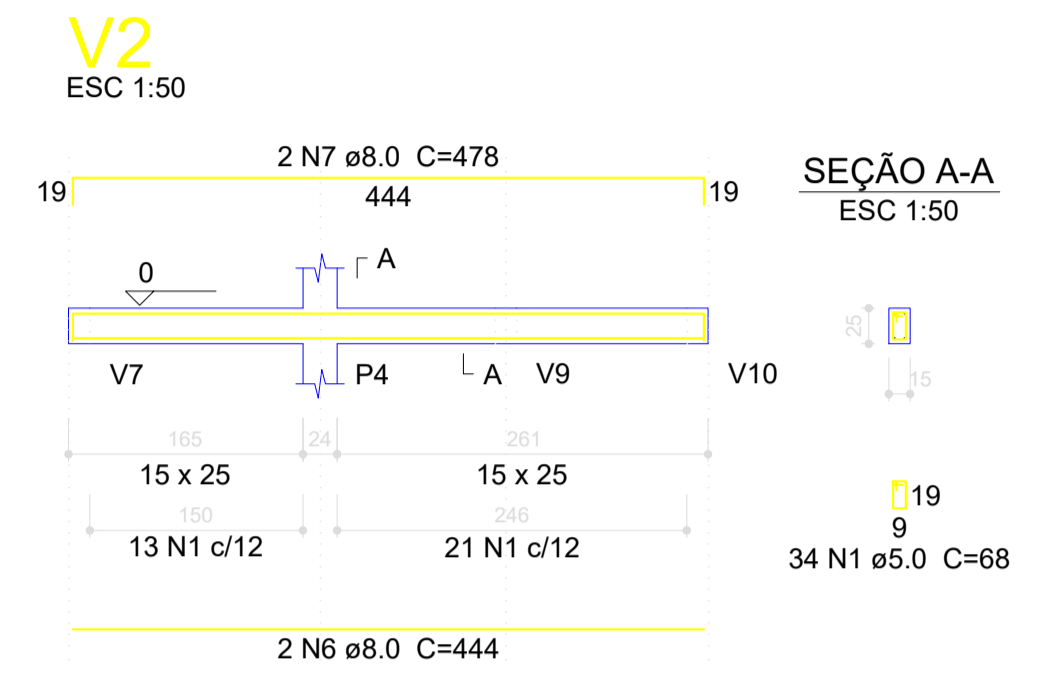
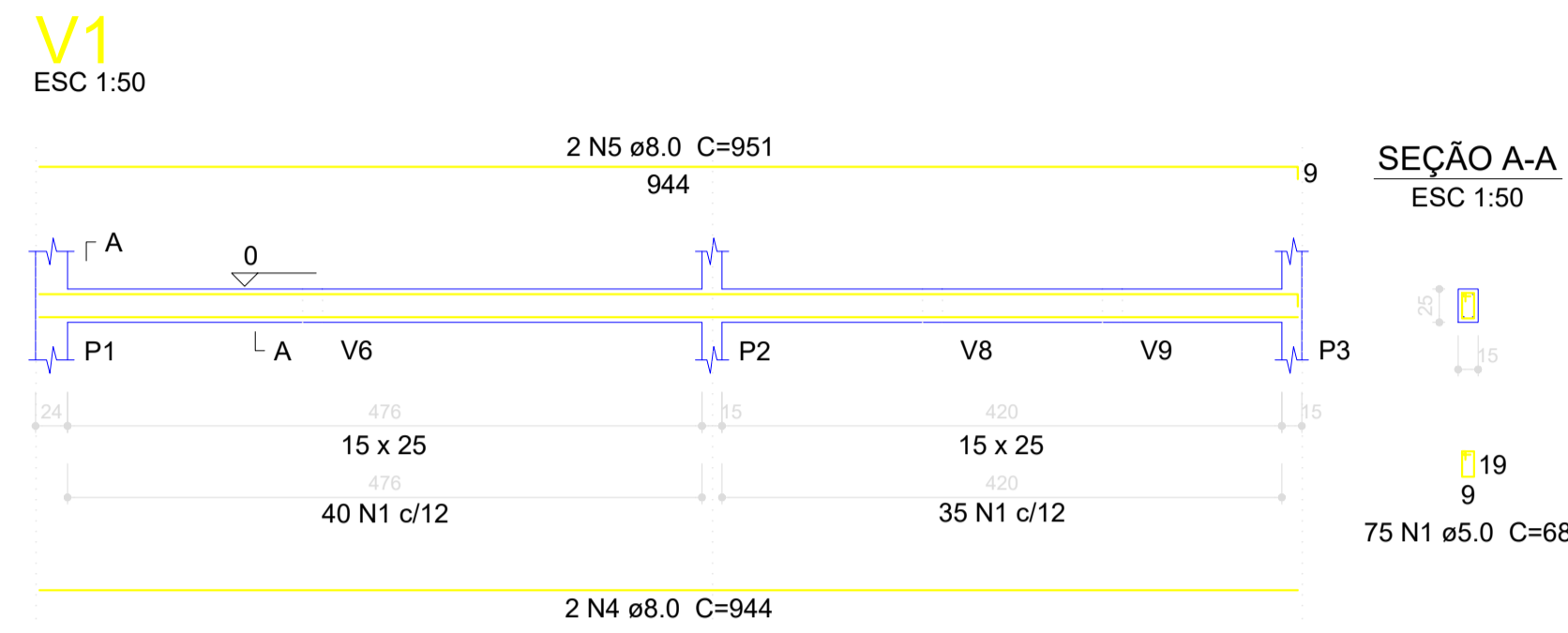
**Relação do aço**

AÇO	N	DIAM (mm)	QUANT (Barras)	UNIT (cm)	C.TOTAL (cm)
CA60	1	5.0	510	68	34680
	2	5.0	2	174	348
	3	5.0	2	374	748
CA50	4	8.0	6	944	5664
	5	8.0	2	951	1902
	6	8.0	2	444	888
	7	8.0	2	478	956
	8	8.0	4	958	3832
	9	8.0	2	382	764
	10	8.0	2	381	762
	11	8.0	2	389	778
	12	8.0	2	408	816
	13	8.0	2	174	348
	14	8.0	2	924	1848
	15	8.0	2	931	1862
	16	8.0	2	932	1864
	17	8.0	2	938	1876
	18	8.0	2	374	748

**Resumo do aço**

AÇO	DIAM (mm)	C.TOTAL (m)	PESO + 10% (kg)
CA50	8.0	249.1	108.1
CA60	5.0	357.8	60.7
<b>PESO TOTAL (kg)</b>			
CA50		108.1	
CA60		60.7	

Volume de concreto (C-25) = 2.43 m<sup>3</sup>  
Área de forma = 42.12 m<sup>2</sup>



REV. Nº	DATA	EMISSÃO INICIAL	DESCRIÇÃO DAS REVISÕES:	AUTOR	VERIFIC.
00	10/08/2022				

CLIENTE: SECRETARIA MUNICIPAL DE SAÚDE DE BALSAS

OBRA: CENTRO AMBULATORIAL (RESTAURANTE)

TÍTULO: PROJETO ESTRUTURAL  
PAVIMENTO FUNDAÇÃO  
PLANTA DE LOCAÇÃO VIGAS  
VIGAS - FORMAS E ARMADURAS

DESENHO: 1:50 DATA: 10/08/2022 RESPONSÁVEL TÉCNICO: JOSE CASSIO ALVES LIMA - CREA/MA REG. Nº 111697653-4

PLANTADO: 1:100 VERIF.: ALVES 18/2022-ESTR-48-000

PREFEITURA DE BALSAS

DES. N.º: ESTR-48

REV. N.º: 00