

PLANTA DE LOCAÇÃO SAPATAS

Escala: 1:50

		Pilar		Carga Máx.		Carga Min.		Fundação		h1 / hb		df
Nome	Seção (cm)	X (cm)	Y (cm)	(t)	(t)	Lado B (cm)	Lado H (cm)	h0 / ha (cm)	(cm)	(cm)	(cm)	(cm)
P1	15x30	-407.50	250.00	5.8	1.6	85	100	25	25	25	25	100
P2	15x30	672.50	250.00	5.8	4.2	85	80	25	25	25	25	100
P3	15x19	90.50	144.50	2.8	1.8	65	60	25	25	25	25	100
P4	15x25	407.50	137.50	6.4	2.7	65	75	25	25	25	25	80
P5	15x29	7.50	-7.50	3.9	3.0	60	90	25	25	25	25	80
P6	15x25	552.50	-7.50	5.9	4.4	55	65	25	25	25	25	80
P7	15x30	672.50	0.00	3.4	1.6	75	90	25	25	25	25	100

Relação do aço

P1	P2	P3
P4	P6	P7
P8	S1	S2
S3	S4	S6
S7	S8	

AÇO	N	DIAM (mm)	QUANT (Barras)	UNIT (cm)	C.TOTAL (cm)
CA60	1	5.0	14	72	1008
	2	5.0	9	68	612
	3	5.0	27	82	2214
	4	5.0	6	80	480
CA50	5	6.3	7	84	588
	6	6.3	29	94	2726
	7	6.3	17	89	1513
	8	6.3	17	104	1768
	9	6.3	7	109	763
	10	6.3	14	119	1666
	11	6.3	12	114	1368
	12	6.3	9	129	1161
	13	10.0	8	VAR	VAR
	14	10.0	16	VAR	VAR
	15	12.5	4	VAR	VAR

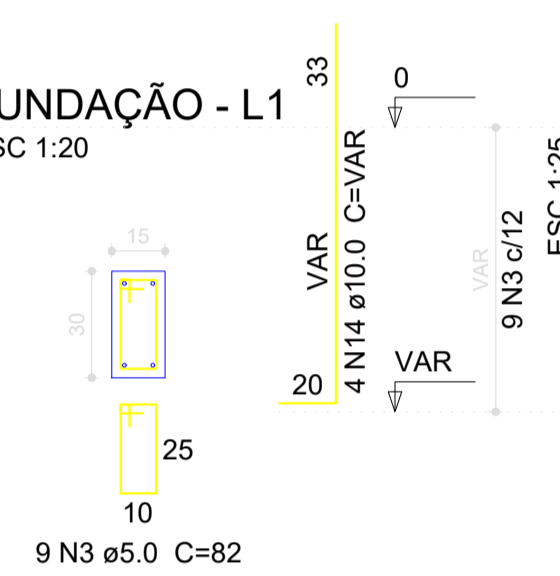
Resumo do aço

AÇO	DIAM (mm)	C.TOTAL (m)	PESO + 10% (kg)
CA50	6.3	115.6	31.1
	10.0	34.7	23.5
	12.5	5.6	5.9
CA60	5.0	43.2	7.3
PESO TOTAL (kg)			
CA50		60.5	
CA60		7.3	

Volume de concreto (C-30) = 0.27 m³
 Volume de concreto (C-25) = 0.96 m³
 Área de forma = 10.59 m²

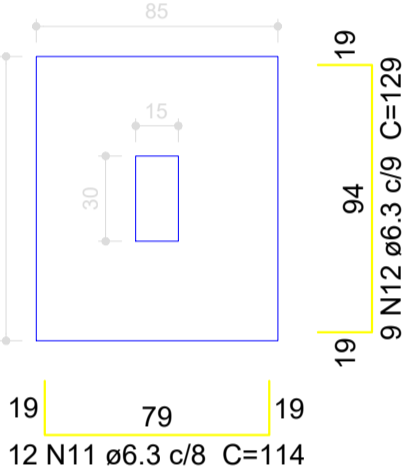
P1

FUNDAÇÃO - L1
ESC 1:20

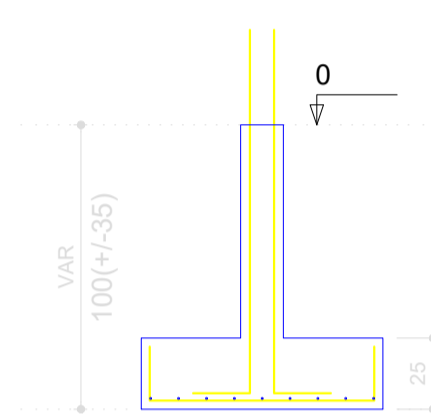


S1

PLANTA
ESC 1:25

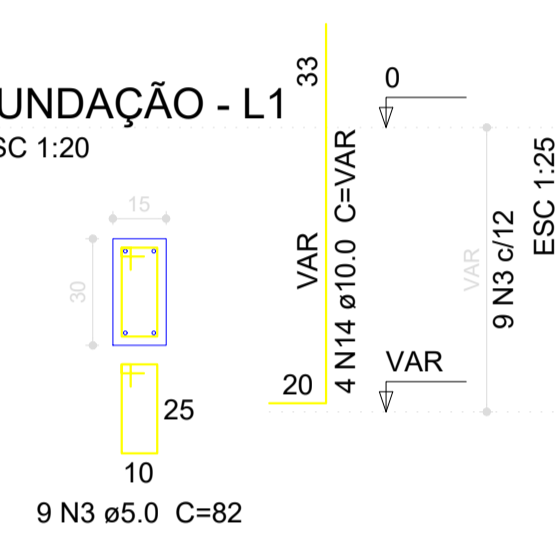


CORTE
ESC 1:25



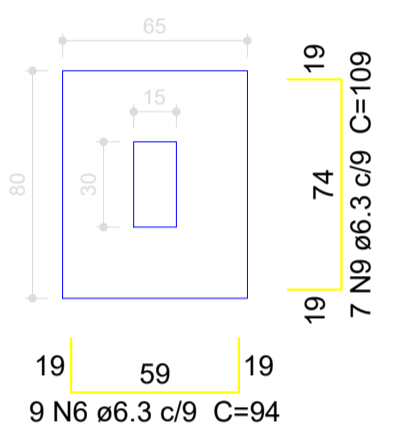
P2

FUNDAÇÃO - L1
ESC 1:20

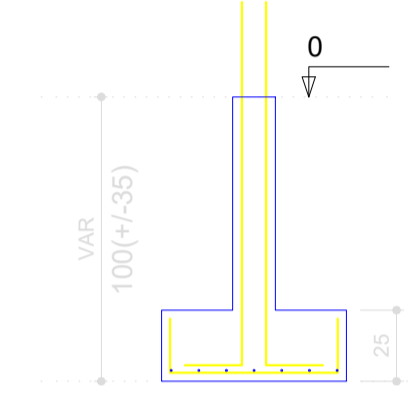


S2

PLANTA
ESC 1:25

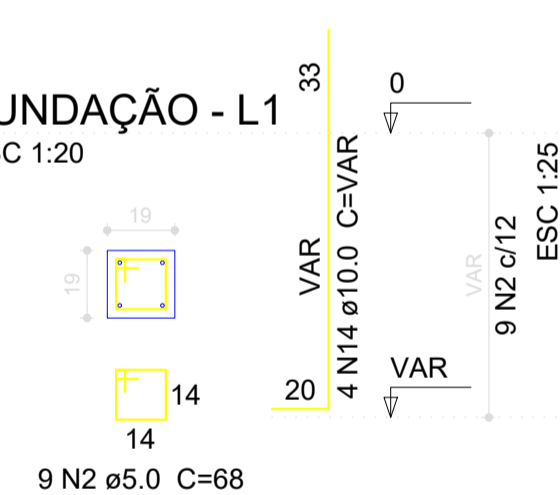


CORTE
ESC 1:25



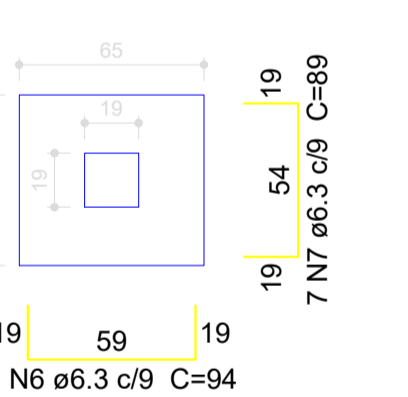
P3

FUNDAÇÃO - L1
ESC 1:20

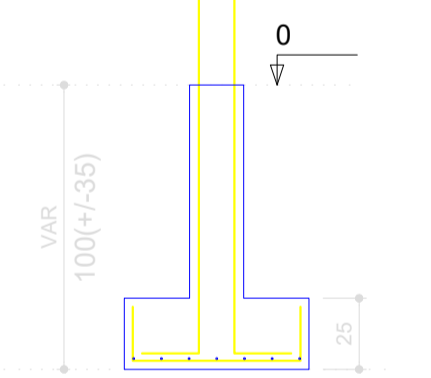


S3

PLANTA
ESC 1:25

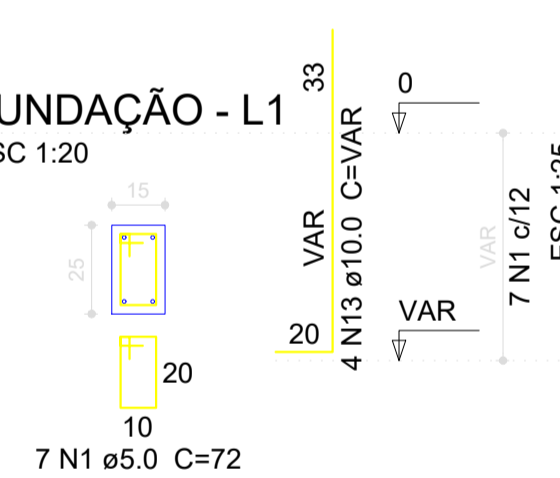


CORTE
ESC 1:25



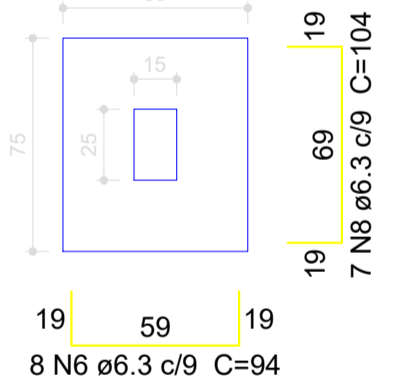
P4

FUNDAÇÃO - L1
ESC 1:20

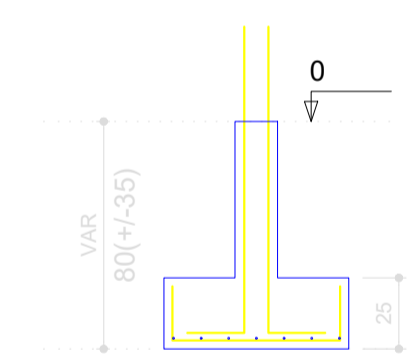


S4

PLANTA
ESC 1:25

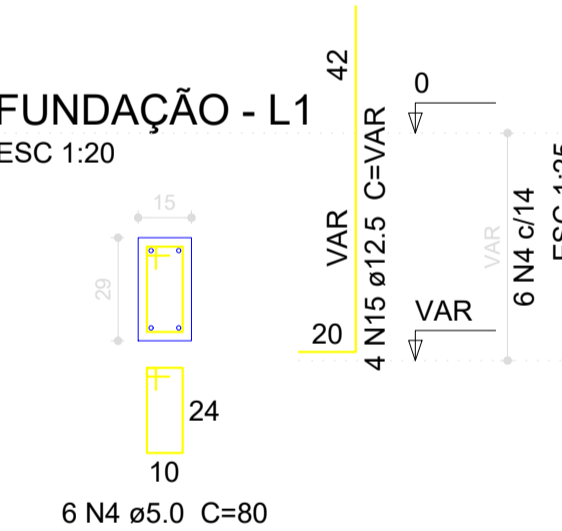


CORTE
ESC 1:25



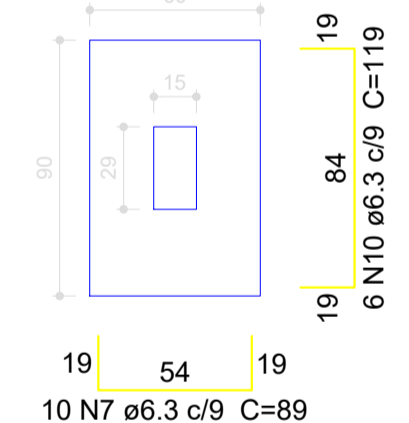
P5

FUNDAÇÃO - L1
ESC 1:20

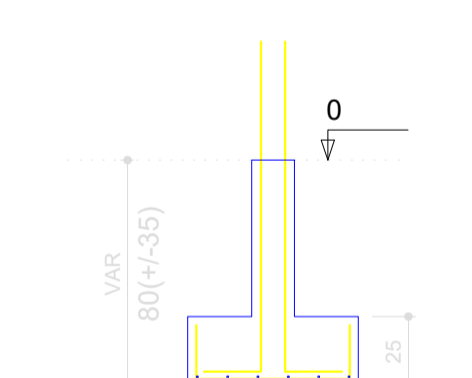


S5

PLANTA
ESC 1:25

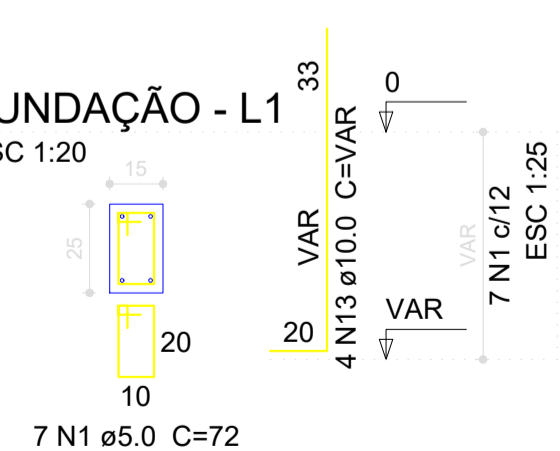


CORTE
ESC 1:25



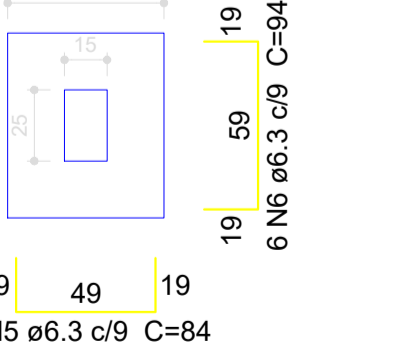
P6

FUNDAÇÃO - L1
ESC 1:20

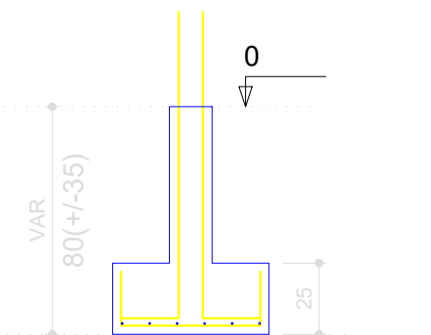


S6

PLANTA
ESC 1:25

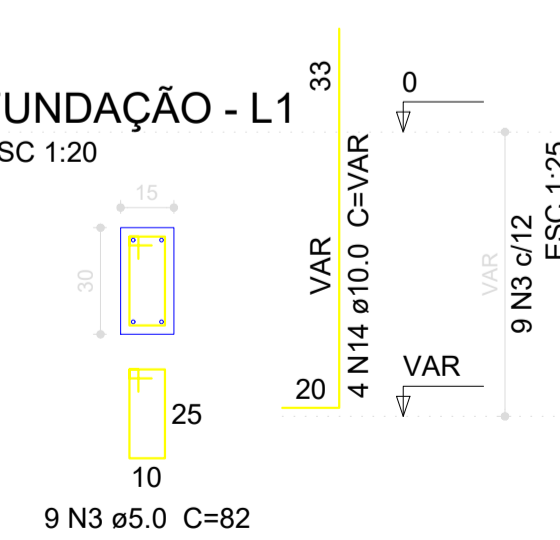


CORTE
ESC 1:25



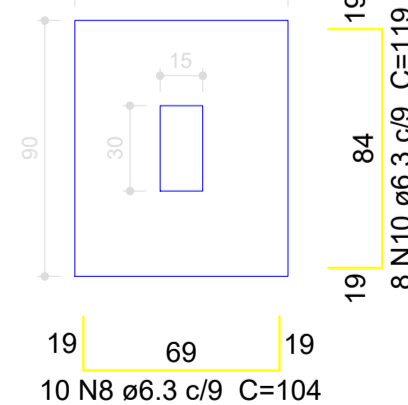
P7

FUNDAÇÃO - L1
ESC 1:20

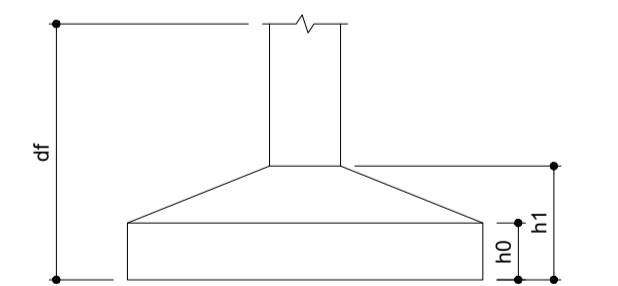
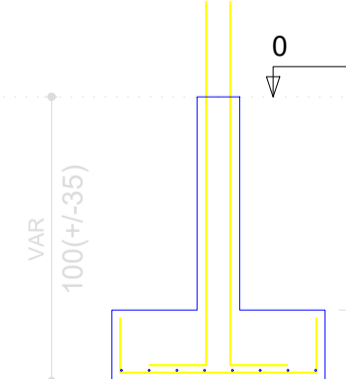


S7

PLANTA
ESC 1:25



CORTE
ESC 1:25



00	18	07	2022	EMISSÃO INICIAL	AUTOR	VERIFIC.
REV. Nº	DATA	MES	ANO	DESCRIÇÃO DAS REVISÕES:		
CLIENTE: SECRETARIA MUNICIPAL DE SAÚDE DE BALSAS						
OBRA: CENTRO AMBULATORIAL						
TÍTULO: PROJETO ESTRUTURAL FUNDAÇÃO - PLANTA DE LOCAÇÃO DE SAPATAS						
DESENHO: 1:50 DATA: 18/07/2022 RESPONSÁVEL TÉCNICO: JOSE CASSIO ALVES LIMA - CREA/MA REG. Nº 111697653-4						
PLANTAS: 1:100 VERIF.:						
						PREFEITURA DE BALSAS DES. N.º ESTR-28 REV. N.º 00 Nº DES. 18/2022-ESTR-28-000