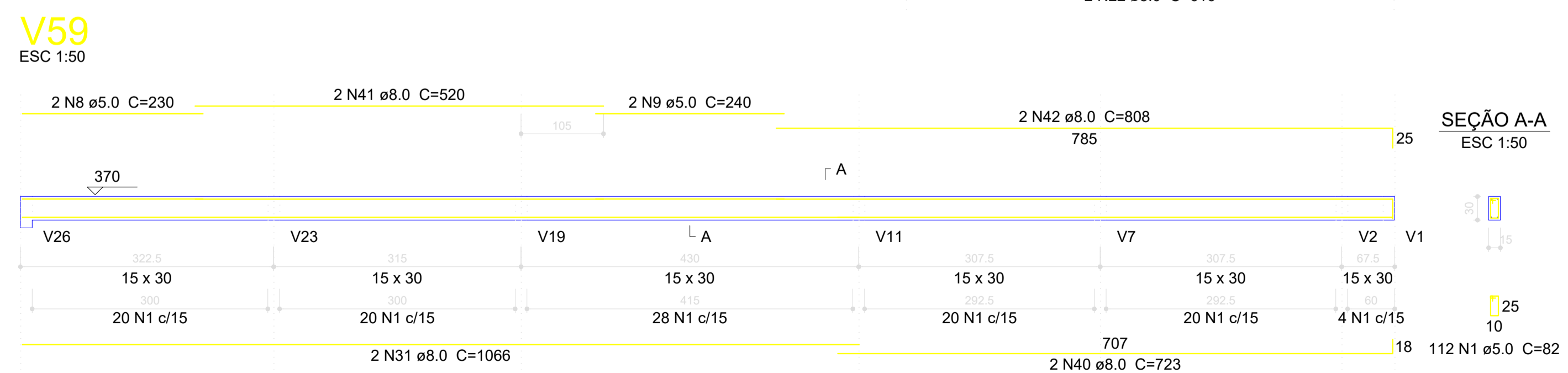
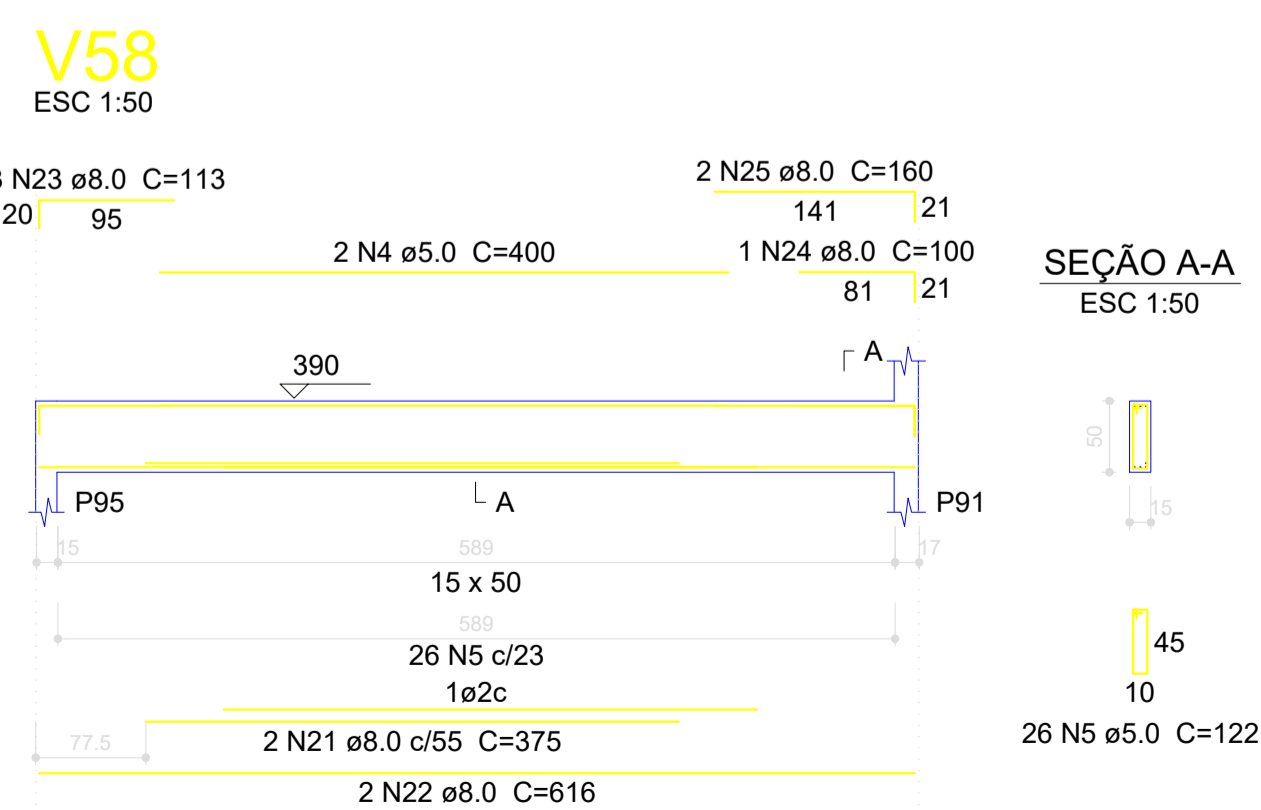
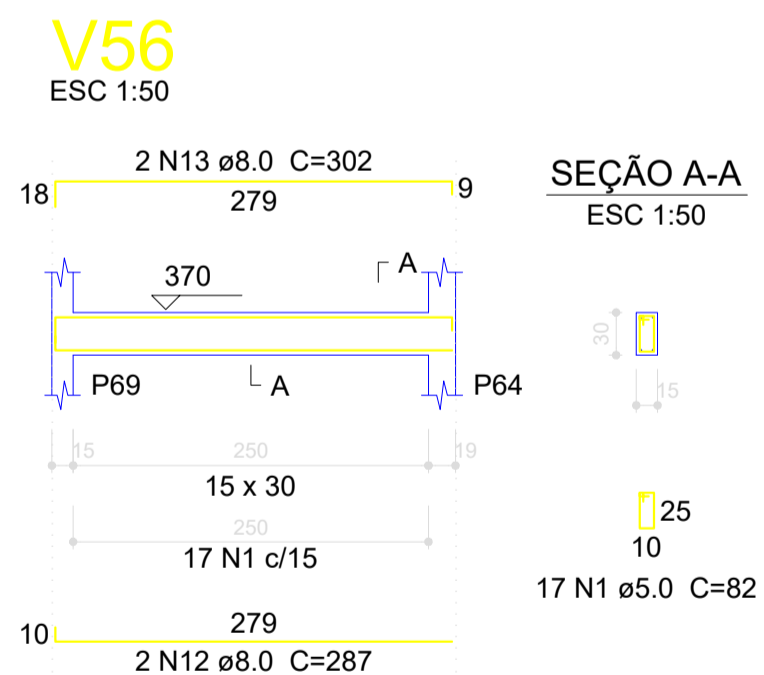
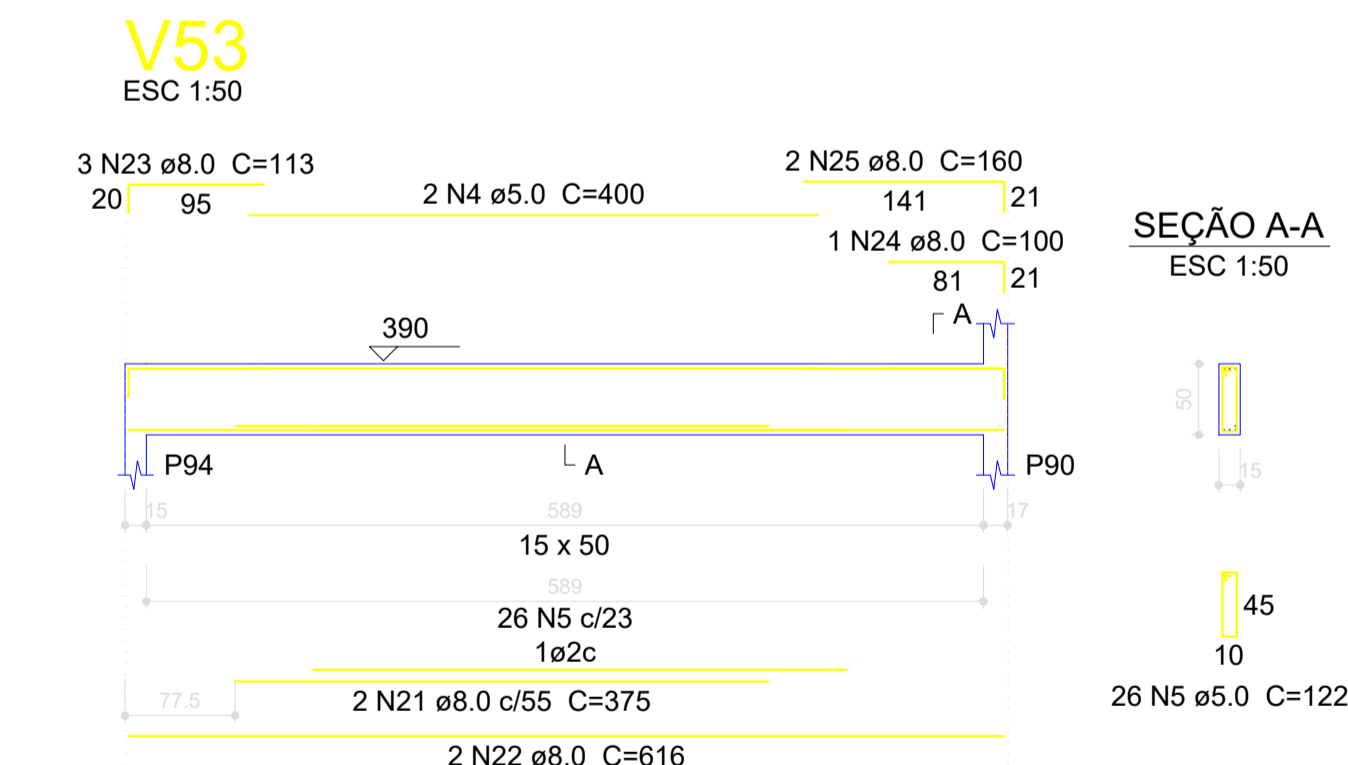
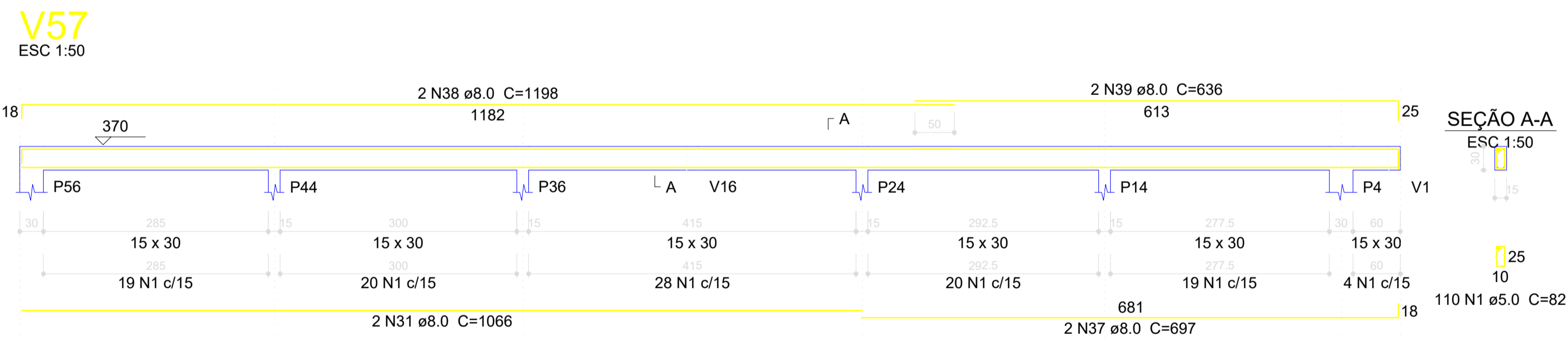
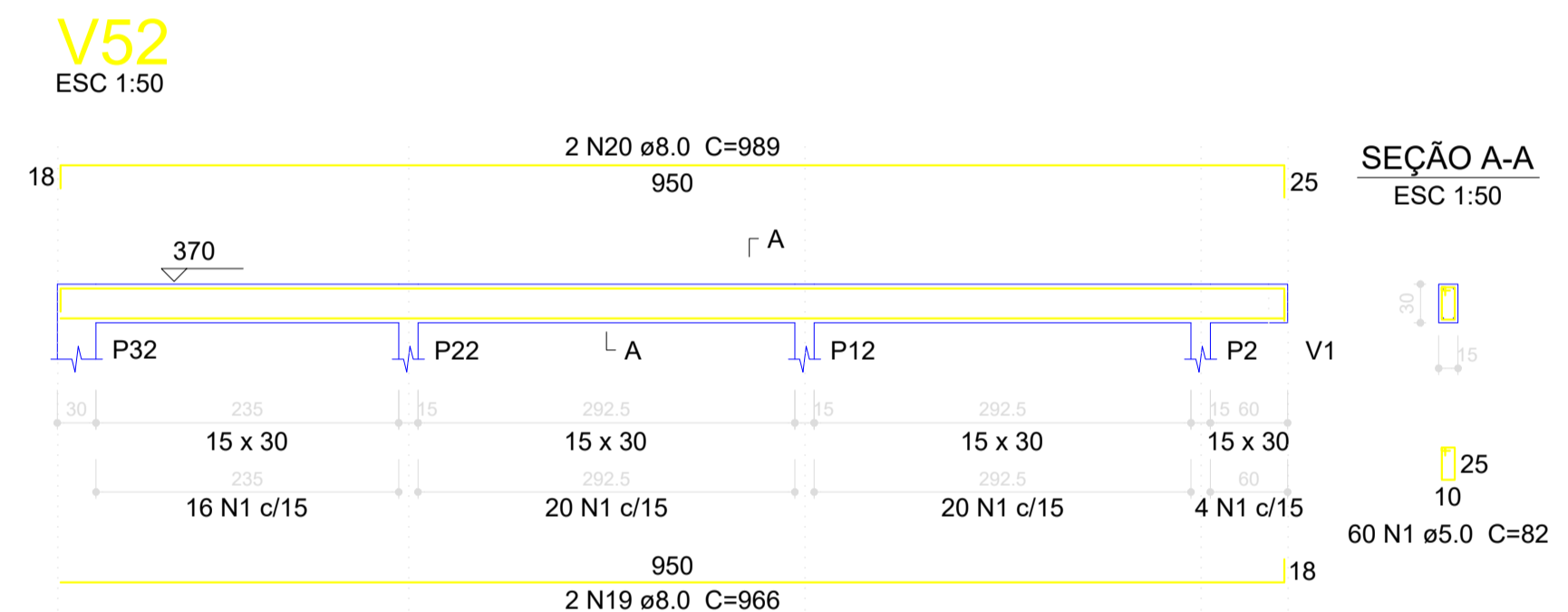
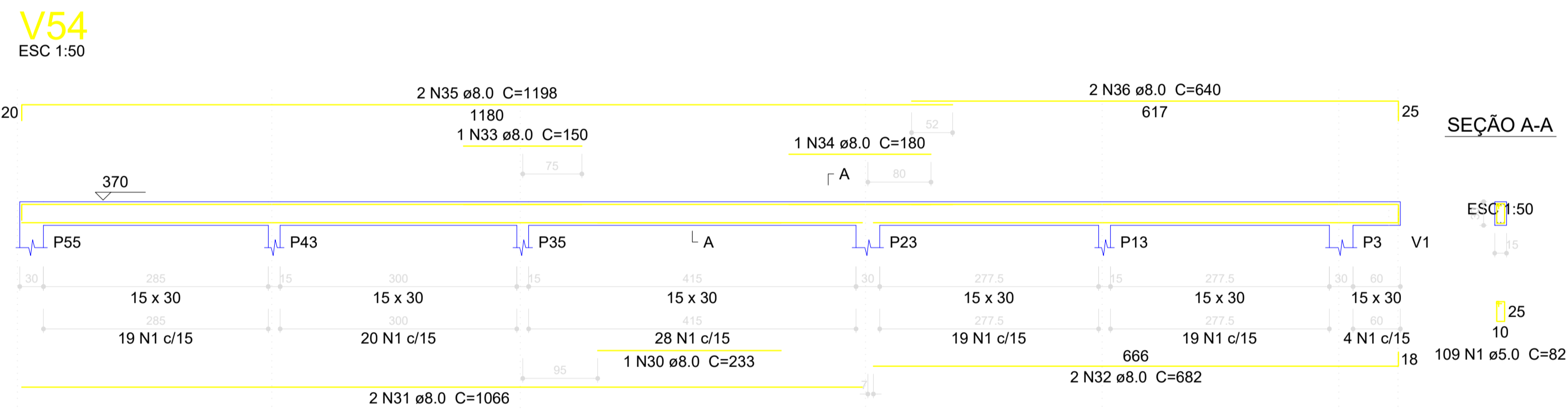
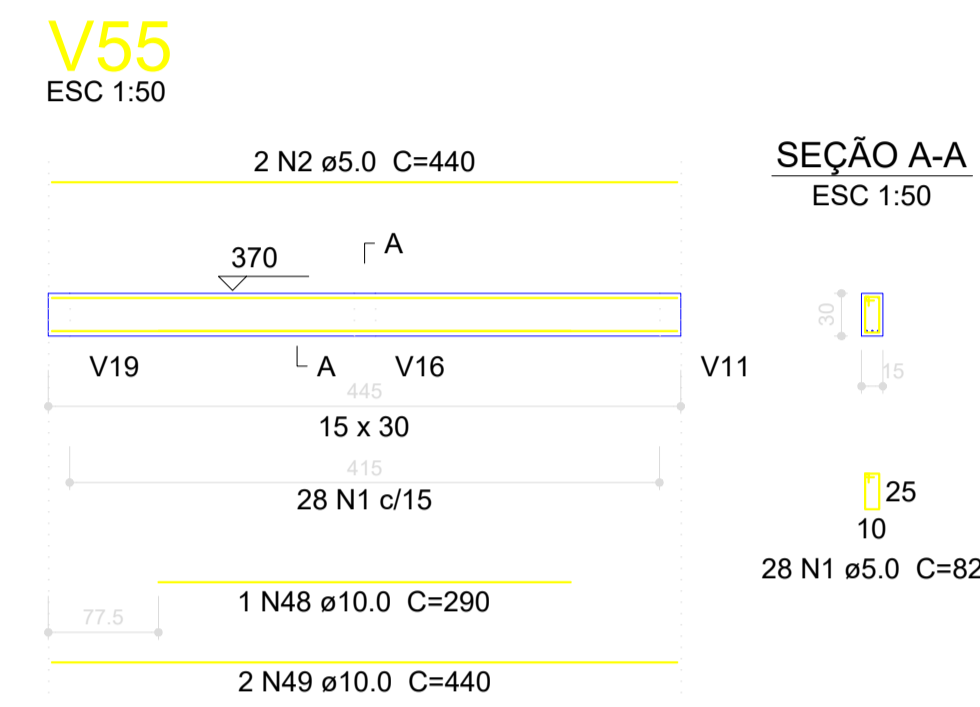
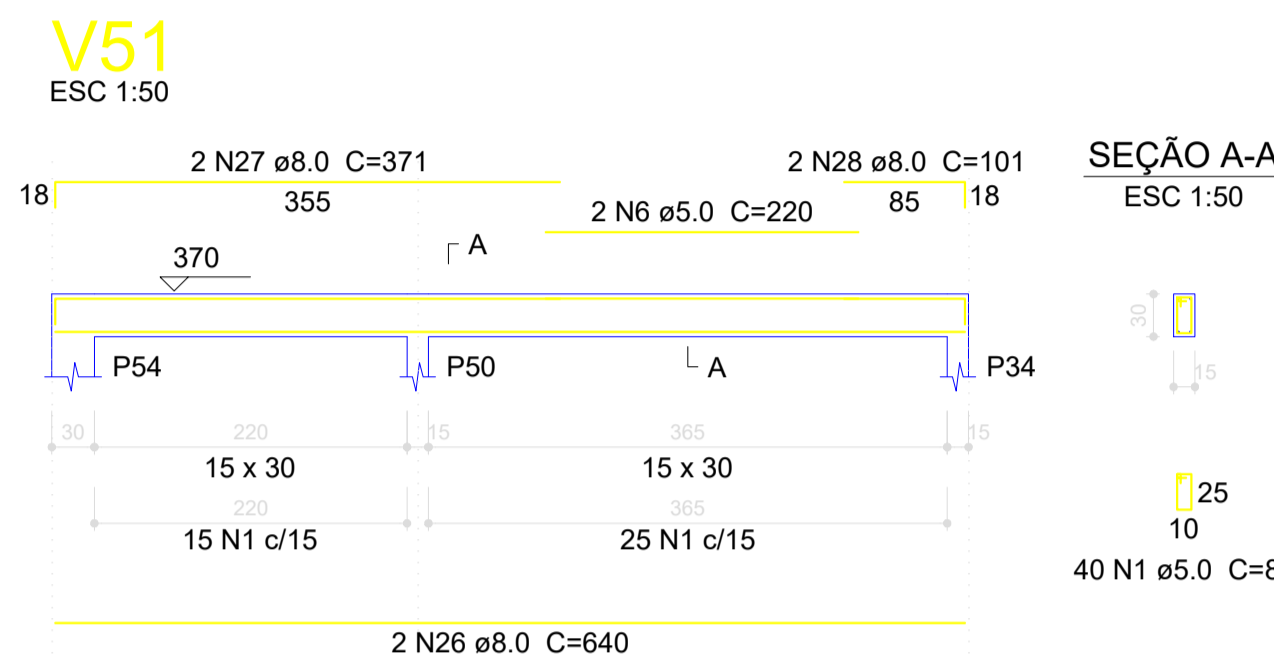
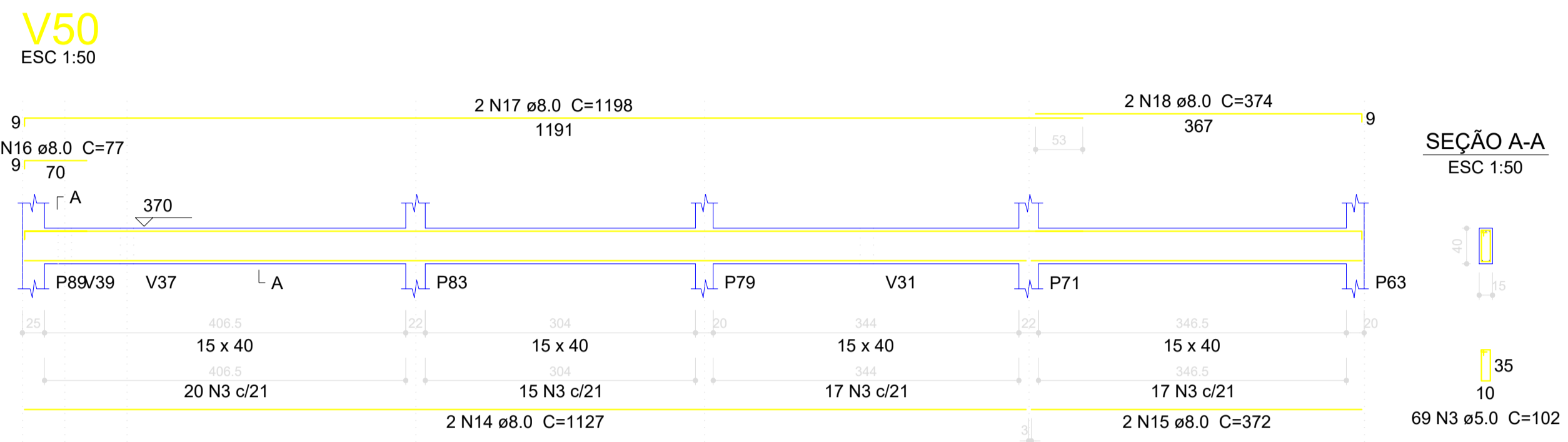


Relação do aço

AÇO	N	DIAM (mm)	QUANT (Barras)	UNIT (cm)	C.TOTAL (cm)
CA60	1	5.0	599	82	49118
	2	5.0	2	440	880
	3	5.0	69	102	7038
	4	5.0	4	400	1600
	5	5.0	52	122	6344
	6	5.0	2	220	440
	7	5.0	2	175	350
	8	5.0	2	230	460
	9	5.0	2	240	480
	10	5.0	2	375	750
	11	5.0	2	243	486
	12	8.0	2	287	574
	13	8.0	2	302	604
	14	8.0	2	1127	2254
	15	8.0	2	372	744
	16	8.0	1	77	77
	17	8.0	2	1198	2396
	18	8.0	2	374	748
	19	8.0	2	966	1932
	20	8.0	2	989	1978
	21	8.0	6	375	2250
	22	8.0	4	616	2464
	23	8.0	6	113	678
	24	8.0	2	100	200
	25	8.0	4	160	640
	26	8.0	2	640	1280
	27	8.0	2	371	742
	28	8.0	2	101	202
	29	8.0	2	175	350
	30	8.0	1	233	233
	31	8.0	6	1066	6396
	32	8.0	2	682	1364
	33	8.0	1	150	150
	34	8.0	1	180	180
	35	8.0	2	1198	2396
	36	8.0	2	640	1280
	37	8.0	2	697	1394
	38	8.0	2	1198	2396
	39	8.0	2	636	1272
	40	8.0	2	723	1446
	41	8.0	2	520	1040
	42	8.0	2	808	1616
	43	8.0	2	525	1050
	44	8.0	2	571	1142
	45	8.0	2	890	1780
	46	8.0	1	129	129
	47	8.0	2	679	1358
	48	10.0	1	290	290
	49	10.0	2	440	880



Resumo do aço

AÇO	DIAM (mm)	C.TOTAL (m)	PESO + 10% (kg)
CA50	8.0	467.4	202.8
CA60	10.0	11.7	7.9
CA60	5.0	679.5	115.2
CA50	210.8		
CA60	115.2		

Volume de concreto (C-30) = 6.14 m³
Área de forma = 100.36 m²

00	30	06	2022	EMISSÃO INICIAL		
REV. Nº	DIA	MES	ANO	DESCRIÇÃO DAS REVISÕES:	AUTOR	VERIFIC.
CLIENTE				SECRETARIA MUNICIPAL DE SAÚDE DE BALSAS		
OBRA				CENTRO AMBULATORIAL		
TÍTULO				PROJETO ESTRUTURAL PAVIMENTO TERREO VICAS - FORMAS E ARMADURAS		
DESENHO:	1:100	DATA:	30/06/2022	RESPONSÁVEIS TÉCNICOS:		
PLANTADO:	1:100	VERIF.:		JOSE CASSIO ALVES LIMA - CREA/MA REG. Nº 111697653-4		
				DES. Nº	ESTR-15	
				REV. Nº	00	
				Nº PROJ.	18/2022-ESTR-15-00	