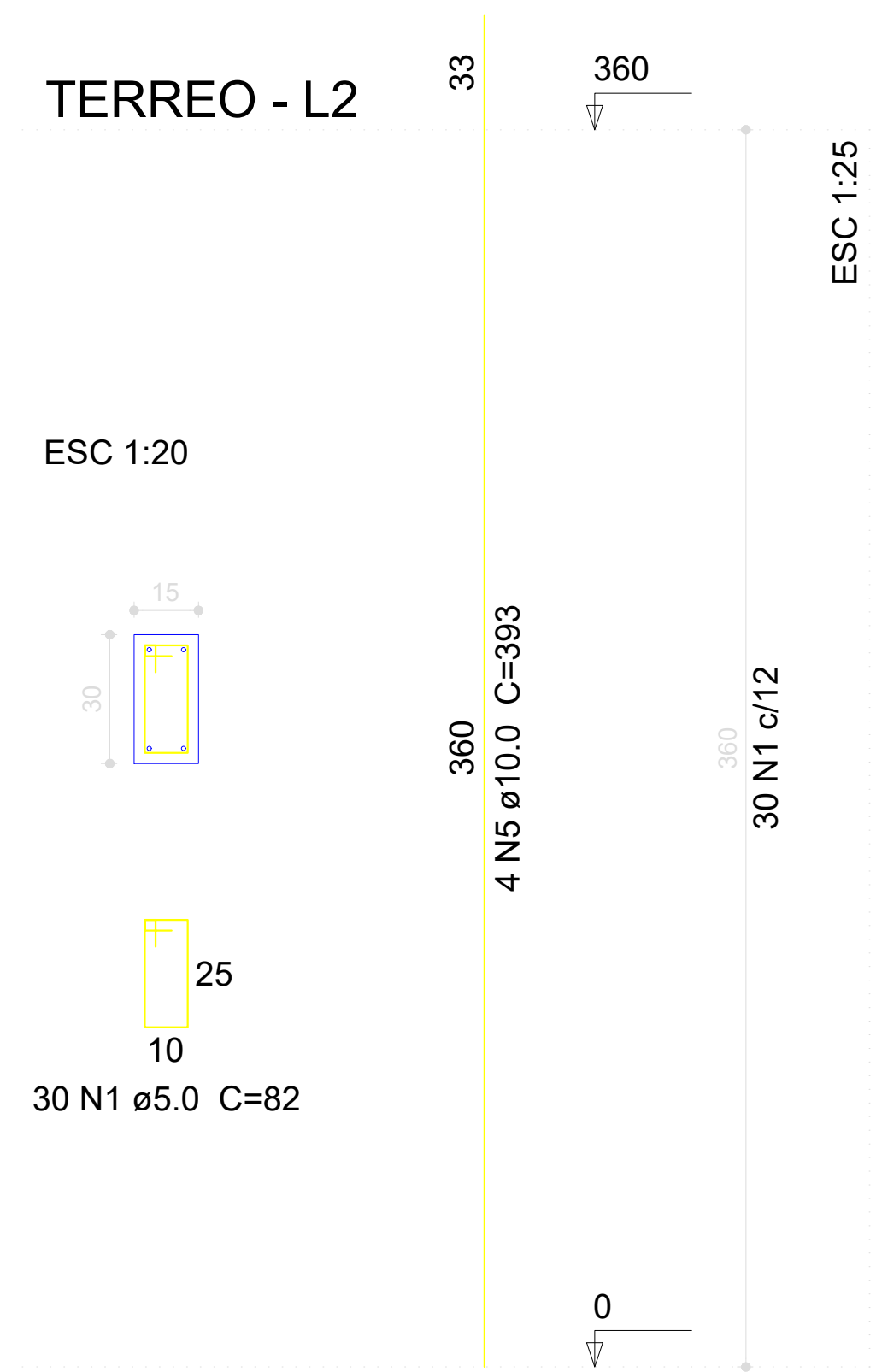
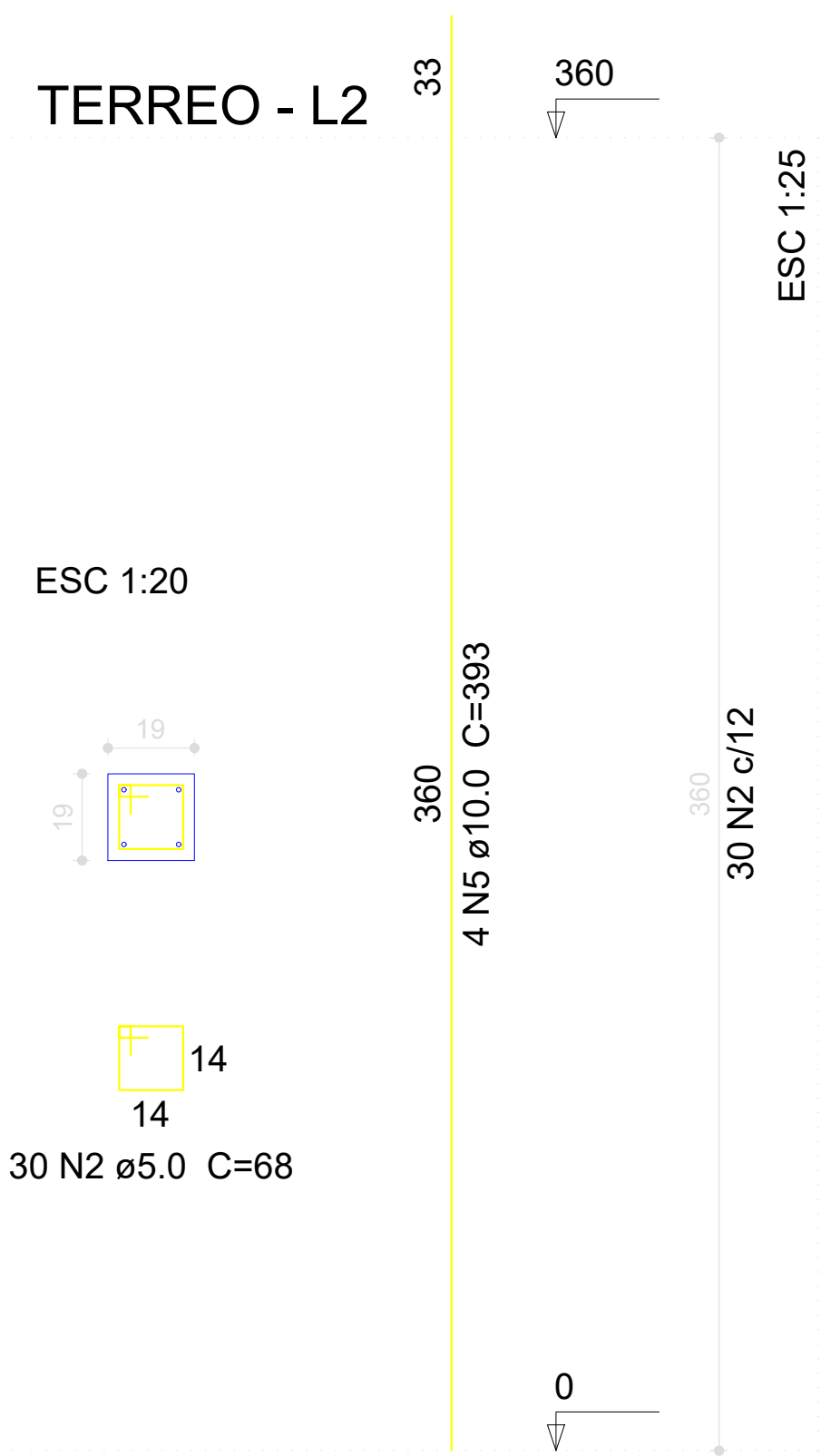


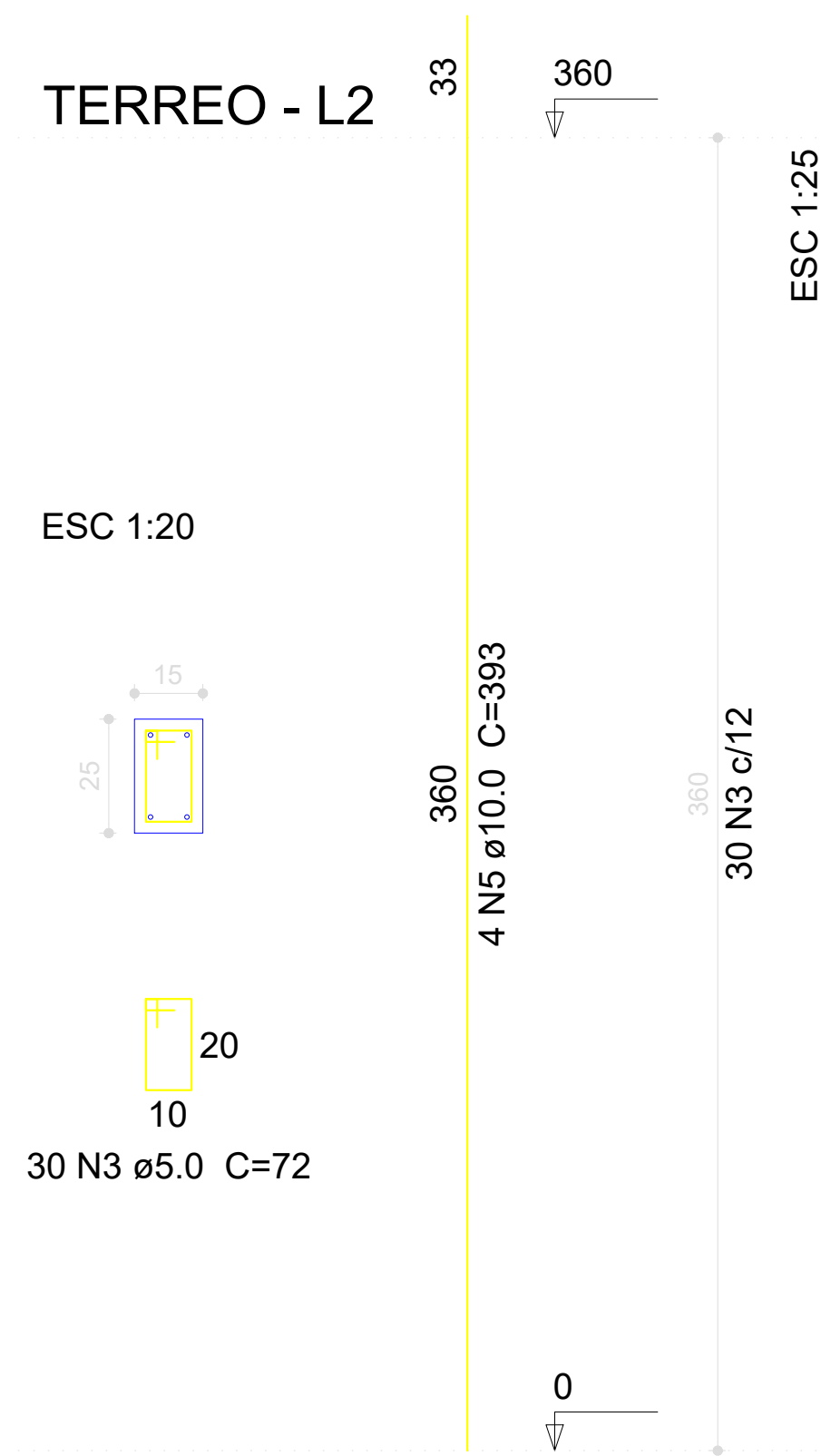
P1=P2=P7



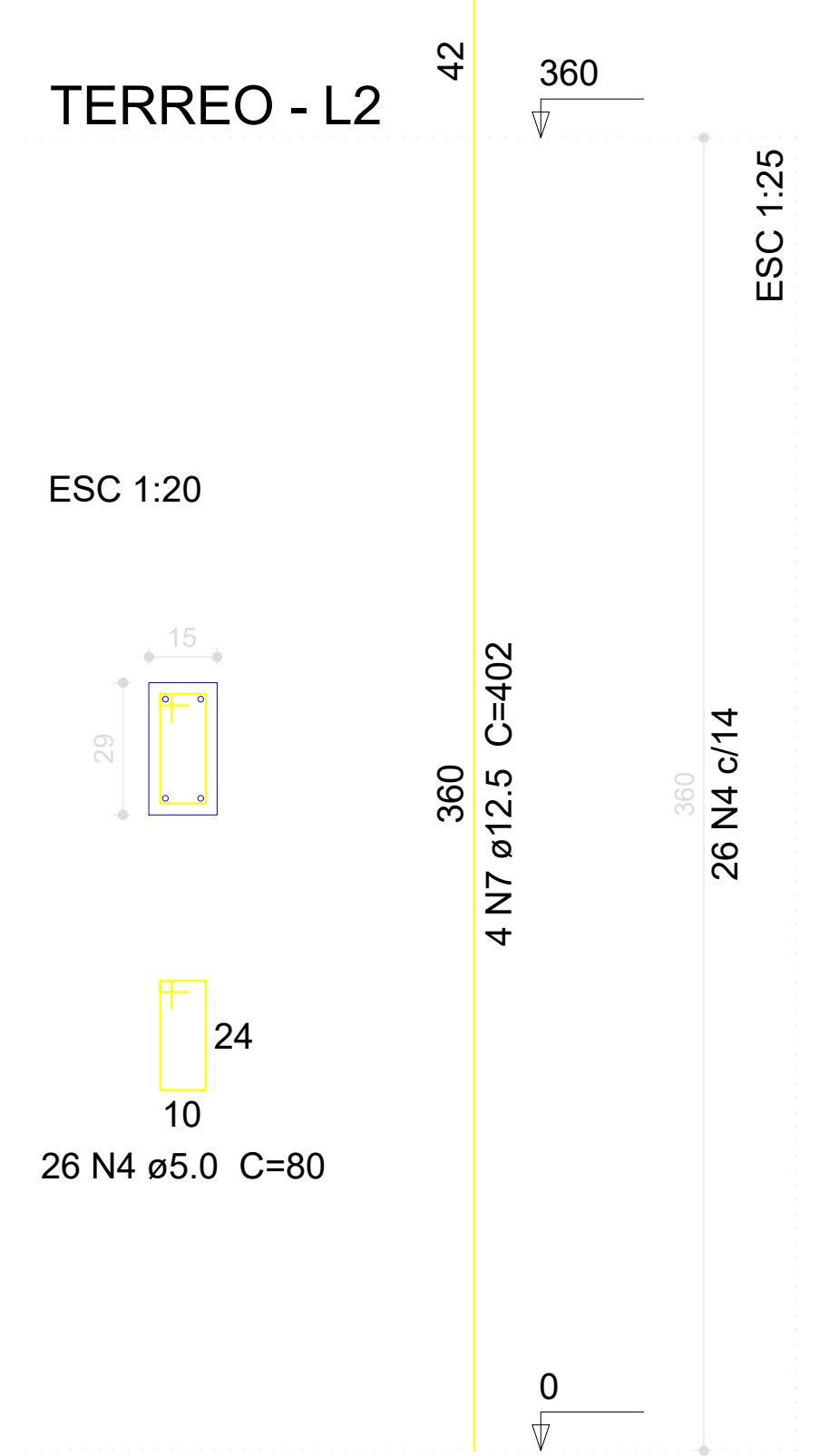
P3



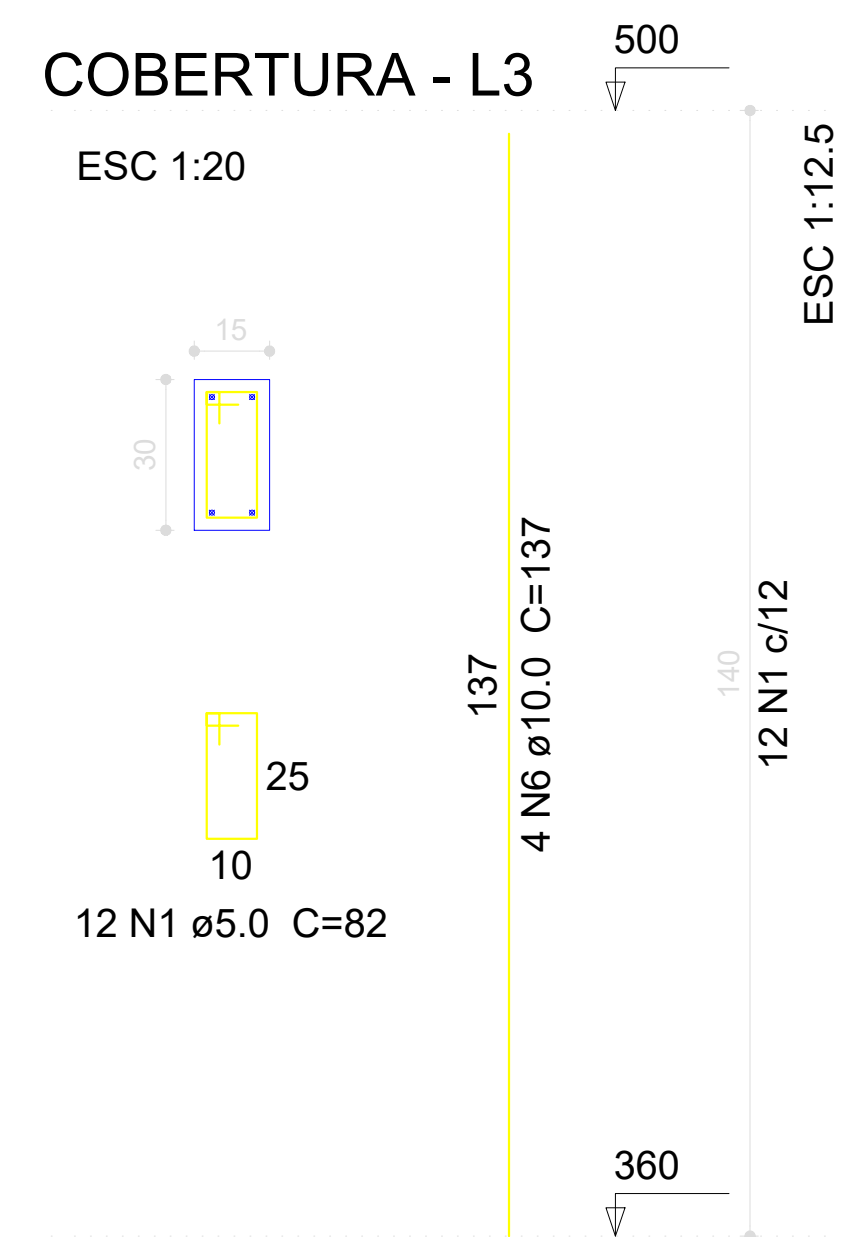
P4=P6



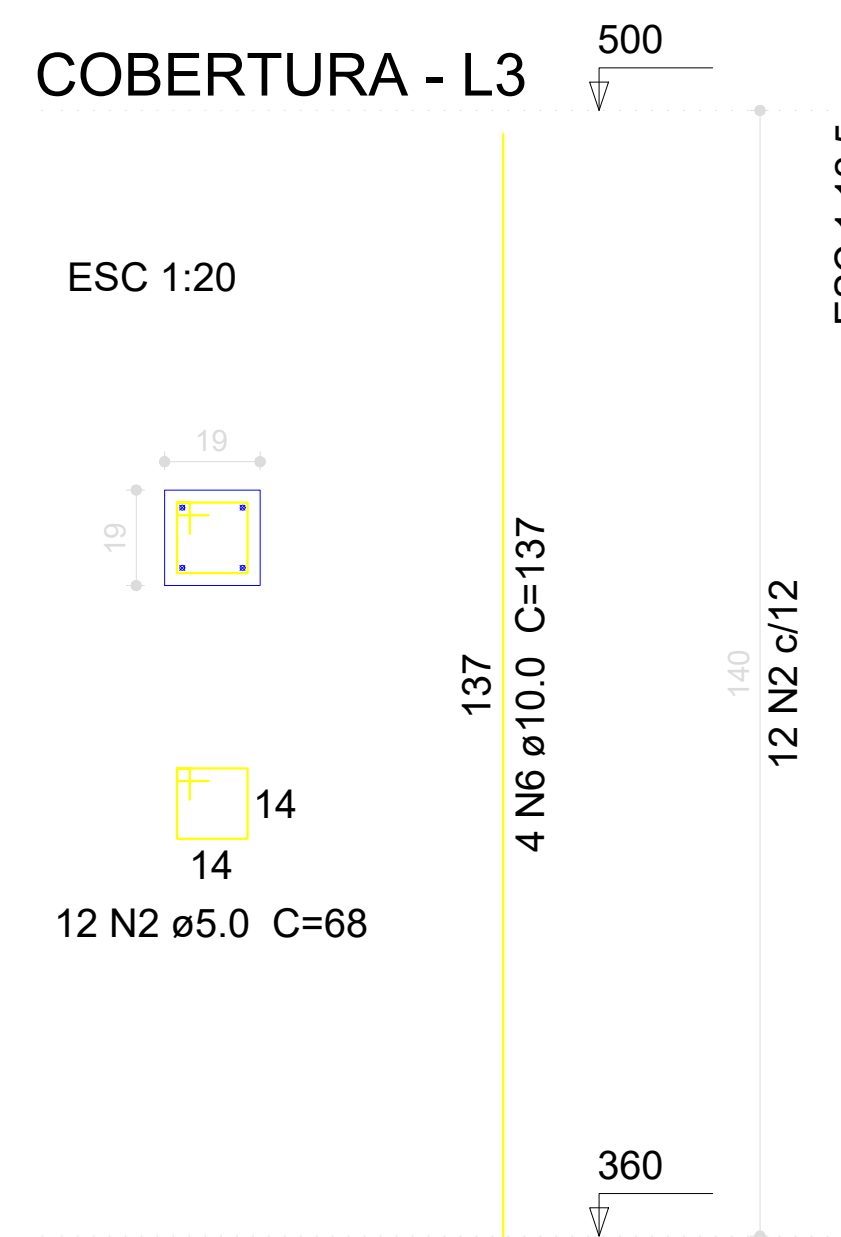
P5



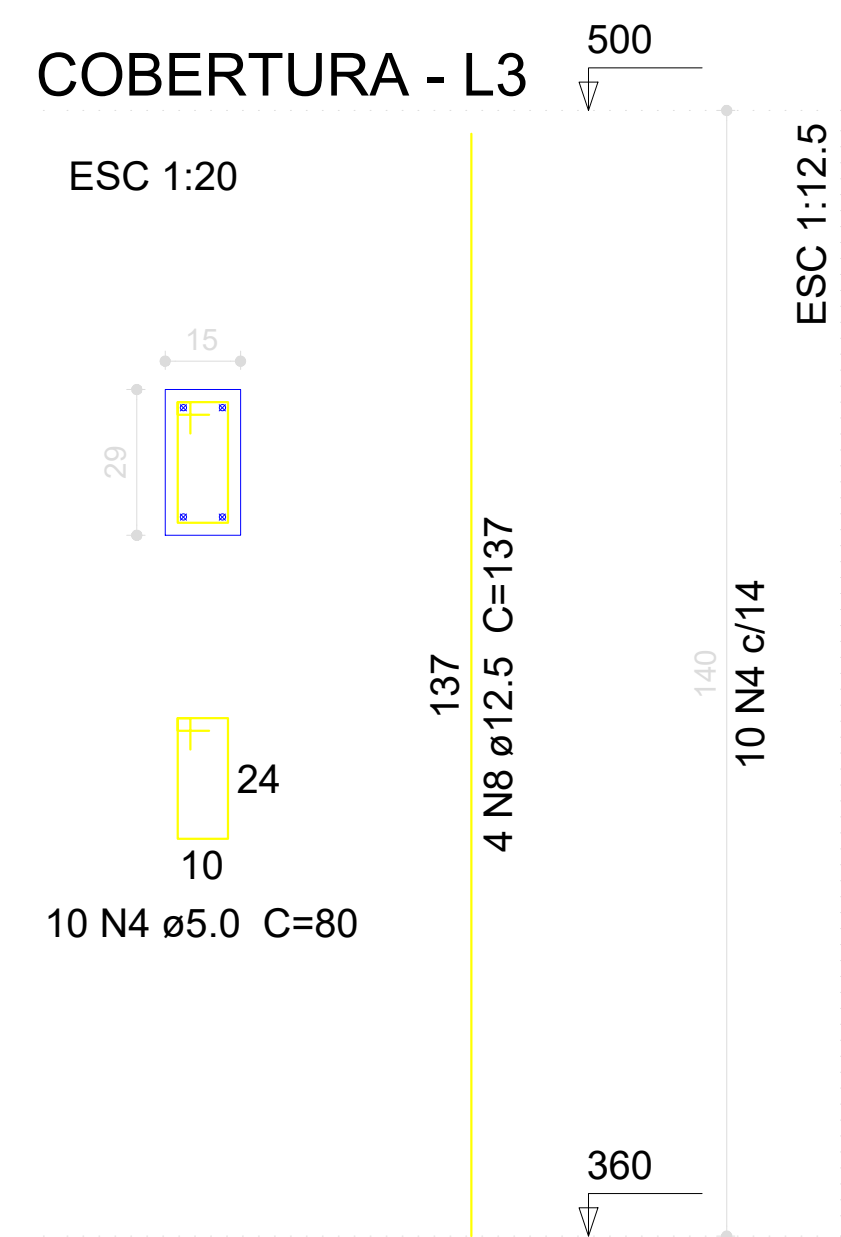
P2=P7



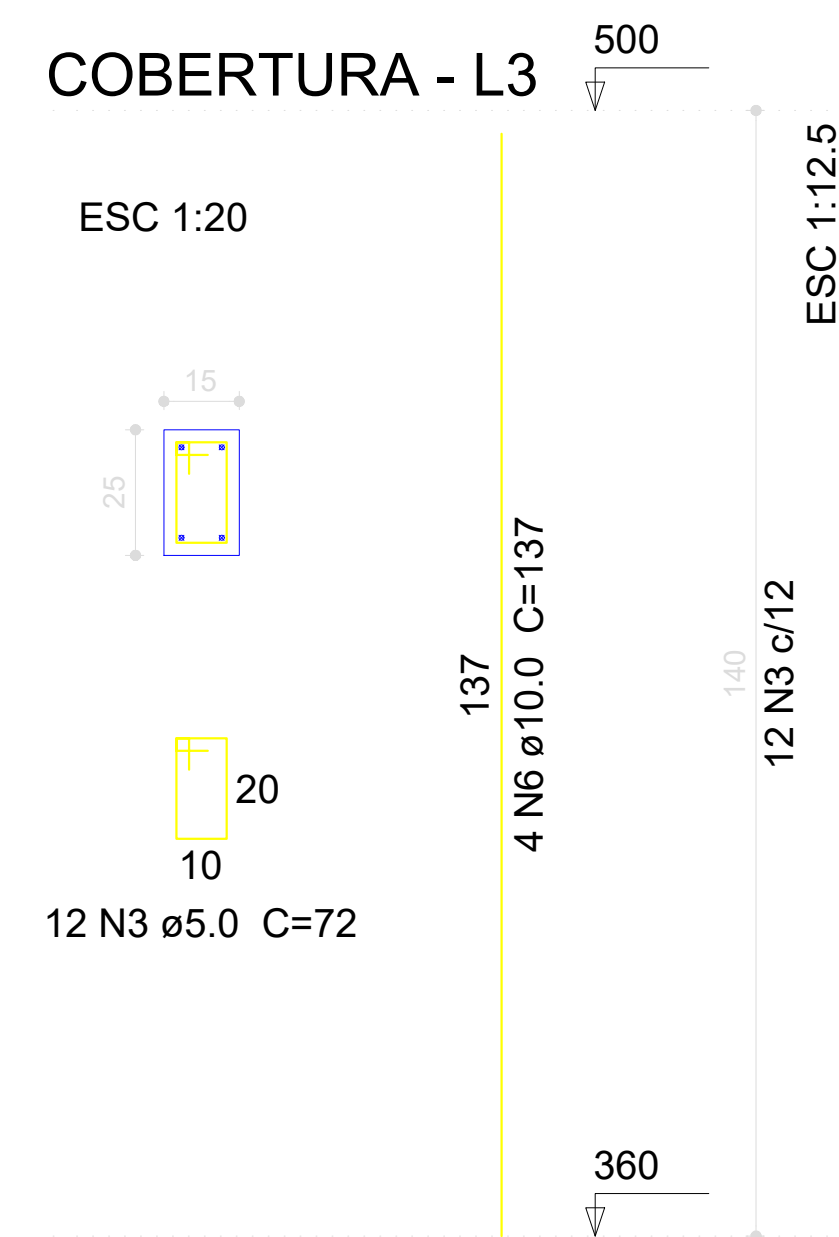
P3



P5



P6



Relação do aço

cobertura:	2xP2	P3
	P5	P6
terreo:	3xP1	P3
	2xP4	P5

AÇO	N	DIAM (mm)	QUANT (Barras)	UNIT (cm)	C.TOTAL (cm)
CA60	1	5.0	114	82	9348
	2	5.0	42	68	2856
	3	5.0	72	72	5184
	4	5.0	36	80	2880
CA50	5	10.0	24	393	9432
	6	10.0	16	137	2192
	7	12.5	4	402	1608
	8	12.5	4	137	548

Resumo do aço

AÇO	DIAM (mm)	C.TOTAL (m)	PESO + 10 % (kg)
CA50	10.0	116.3	78.8
CA60	5.0	202.7	34.4
PESO TOTAL (kg)			
CA50		101.7	
CA60		34.4	

Volume de concreto (C-30) = 1.33 m³  
Área de forma = 27.32 m²

00	18	07	2022	EMISSÃO INICIAL		
REV. N°	DIA	MES	ANO	DESCRIÇÃO DAS REVISÕES:	AUTOR	VERIFIC.
CLIENTE: SECRETARIA MUNICIPAL DE SAÚDE DE BALSAS						
OBRA: CENTRO AMBULATORIAL						
TÍTULO: PROJETO ESTRUTURAL PAVIMENTO TERREO/COBERTURA PILARES - FORMAS E ARMADURAS						
DESENHO:	1:50	DATA:	18/07/2022	RESPONSÁVEIS TÉCNICOS:	JOSE CASSIO ALVES LIMA - CREA/MA REG. N° 111697653-6	
PLOTAGEM:	1:100	VERIF.:				
						DES. N.º ESTR-30 REV. N.º 00 N.º DES. 16.2022-ESTR-30-ROO

