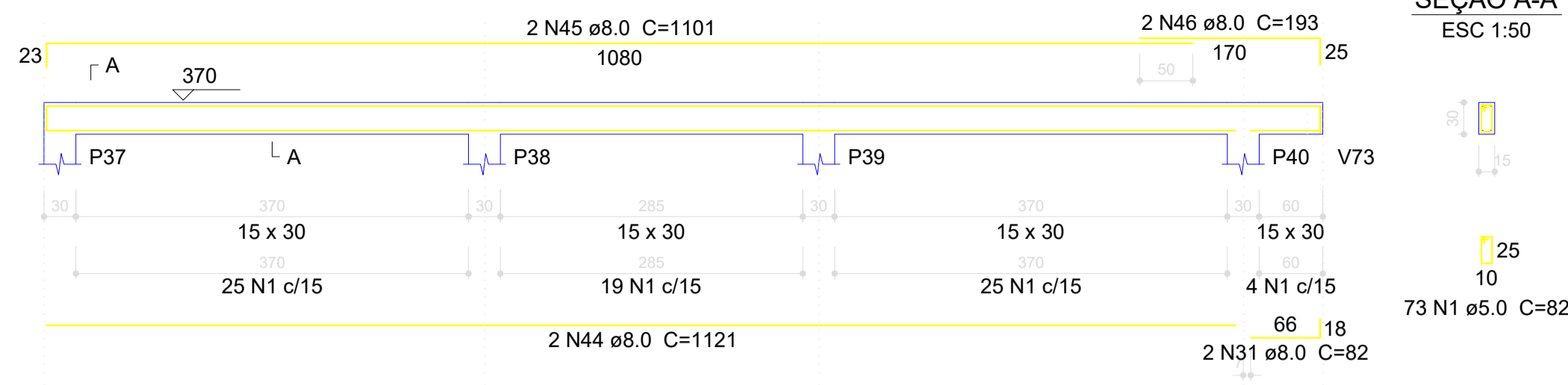
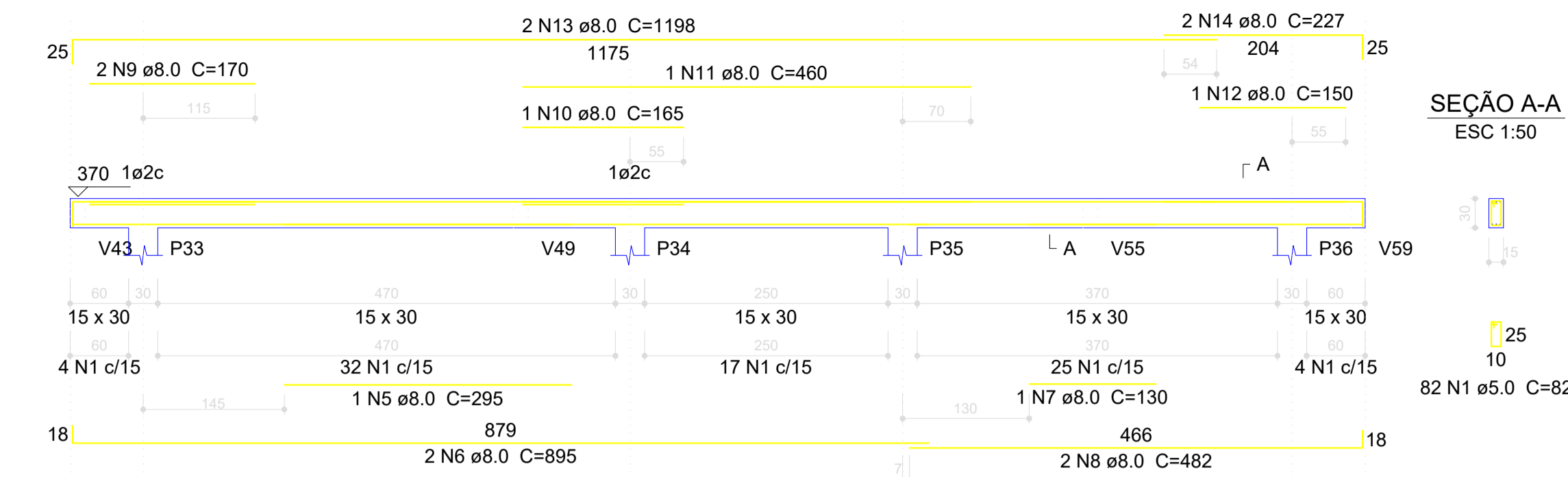


V18
ESC 1:50



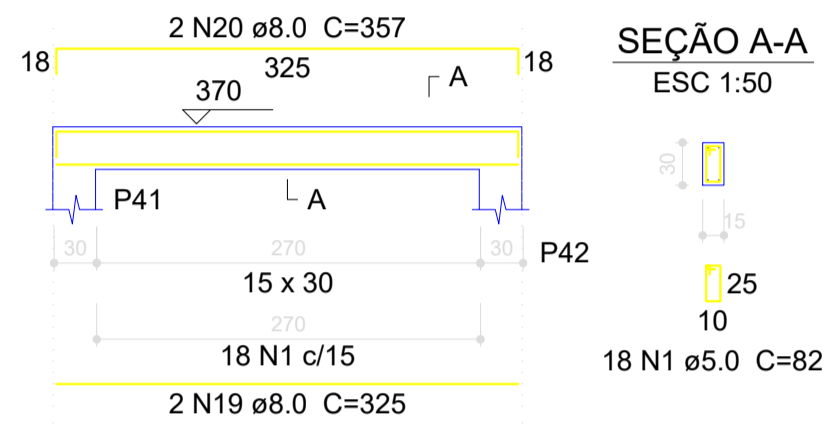
V19
ESC 1:50



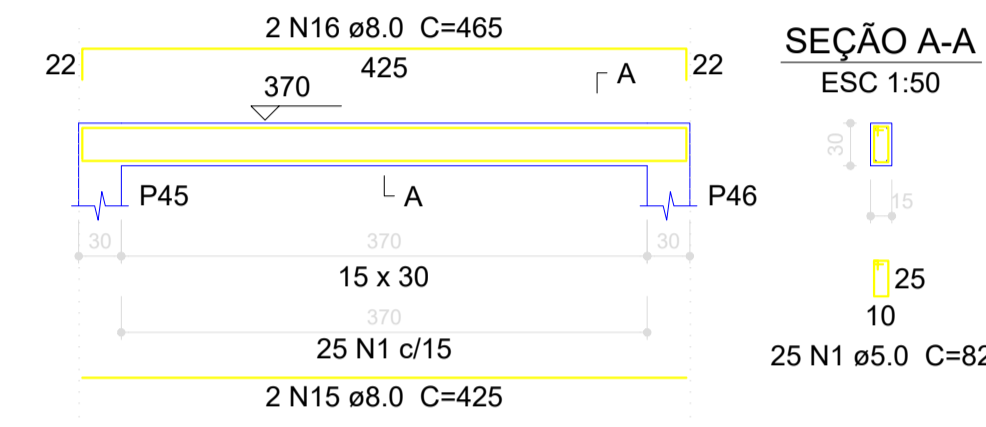
Relação do aço

AÇO	N	DIAM (mm)	QUANT (Barras)	UNIT (cm)	C.TOTAL (cm)
CA60	1	5.0	2	82	43214
	2	5.0	2	223	446
	3	5.0	143	102	14586
	4	5.0	2	365	730
CA50	5	8.0	1	295	295
	6	8.0	2	895	1790
	7	8.0	1	130	130
	8	8.0	2	482	964
	9	8.0	2	170	340
	10	8.0	1	165	165
	11	8.0	1	460	460
	12	8.0	1	150	150
	13	8.0	2	1198	2396
	14	8.0	2	227	454
	15	8.0	2	425	850
	16	8.0	2	465	930
	17	8.0	4	501	2004
	18	8.0	4	527	2108
	19	8.0	4	325	1300
	20	8.0	4	357	1428
	21	8.0	2	225	450
	22	8.0	2	601	1202
	23	8.0	2	180	360
	24	8.0	2	142	284
	25	8.0	2	632	1264
	26	8.0	1	151	151
	27	8.0	2	558	1116
	28	8.0	1	145	145
	29	8.0	1	106	106
	30	8.0	2	572	1144
	31	8.0	6	82	492
	32	8.0	2	1054	2108
	33	8.0	2	1089	2178
	34	8.0	2	414	828
	35	8.0	1	175	175
	36	8.0	1	191	191
	37	8.0	4	1200	4800
	38	8.0	2	509	1018
	39	8.0	2	544	1088
	40	8.0	1	305	305
	41	8.0	2	1014	2028
	42	8.0	1	188	188
	43	8.0	2	1192	2384
	44	8.0	2	1121	2242
	45	8.0	2	1101	2202
	46	8.0	2	193	386
	47	10.0	1	193	193
	48	10.0	2	533	1066
	49	10.0	2	170	340
	50	10.0	2	256	512
	51	10.0	2	723	1446
	52	10.0	1	165	165
	53	10.0	2	1200	2400
	54	10.0	2	574	1148

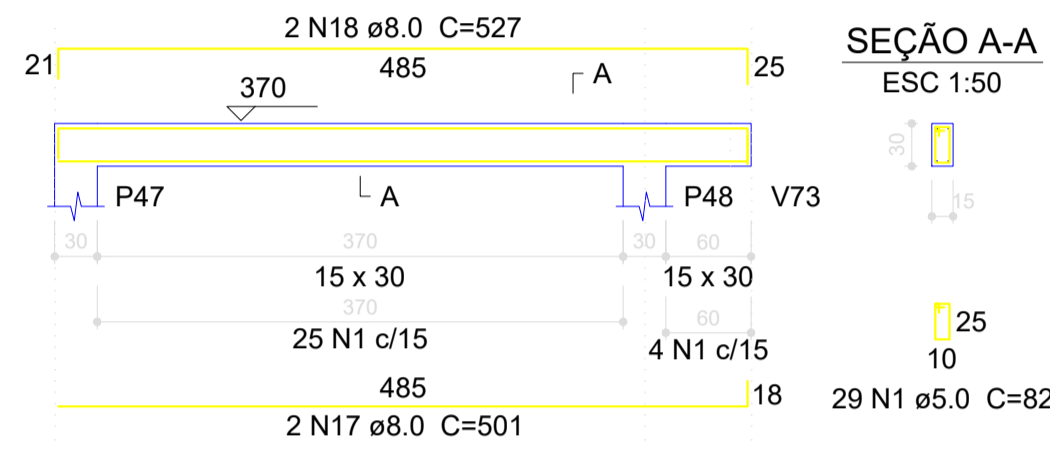
V20
ESC 1:50



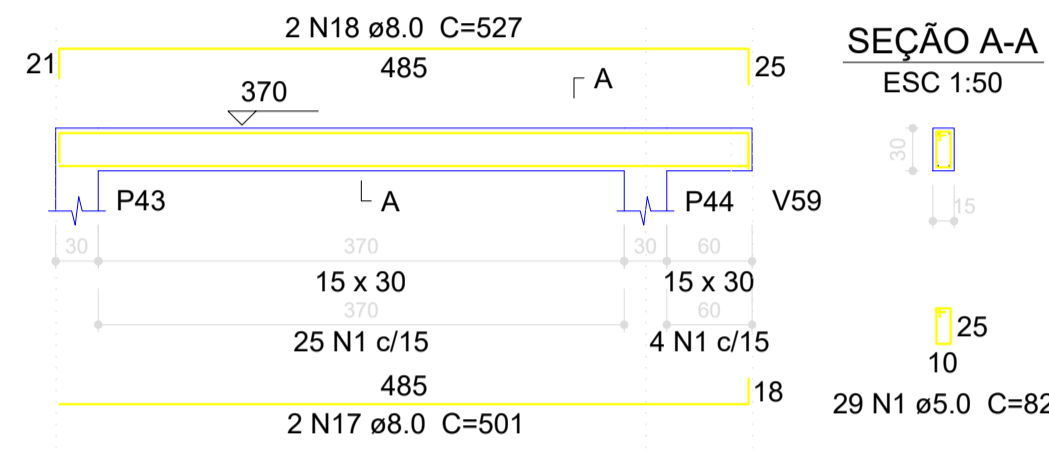
V21
ESC 1:50



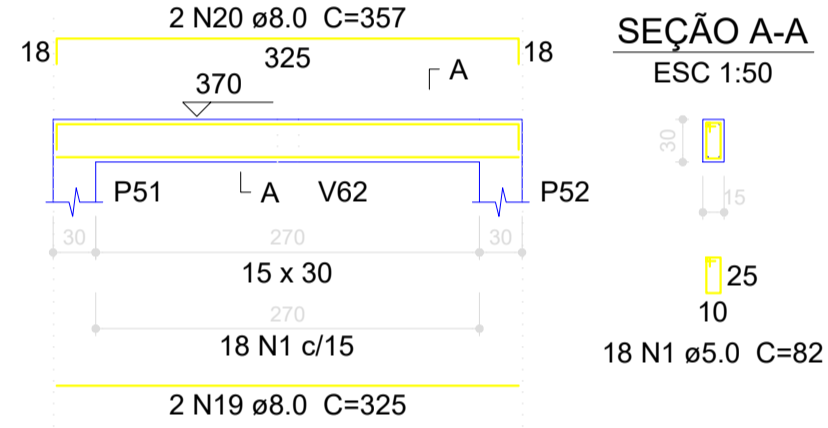
V22
ESC 1:50



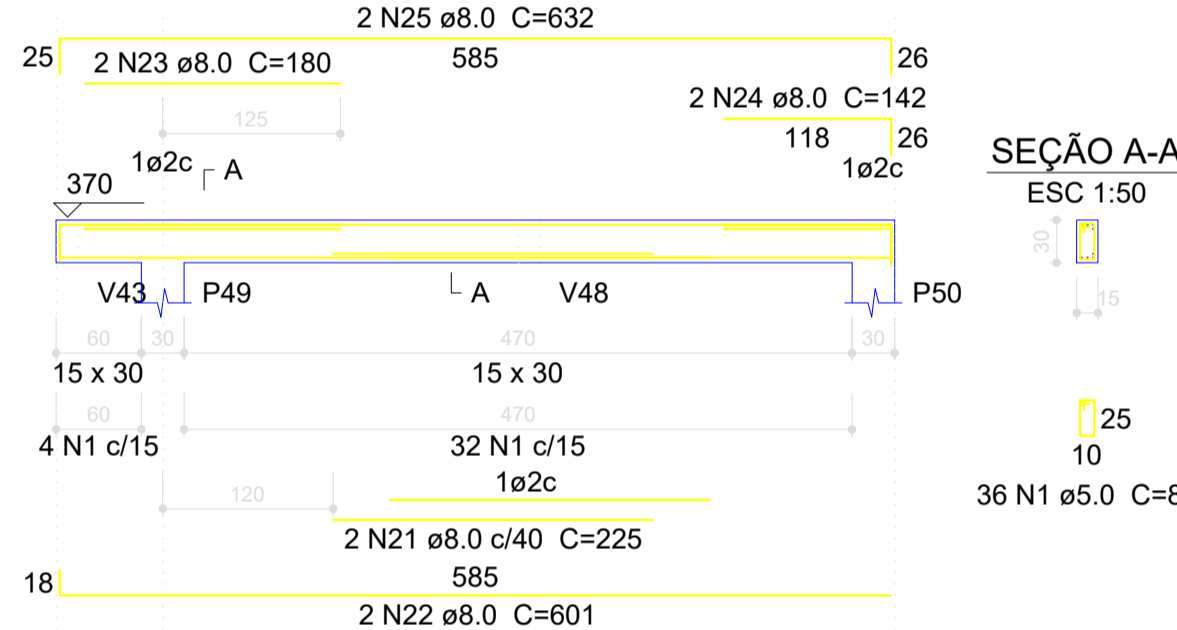
V23
ESC 1:50



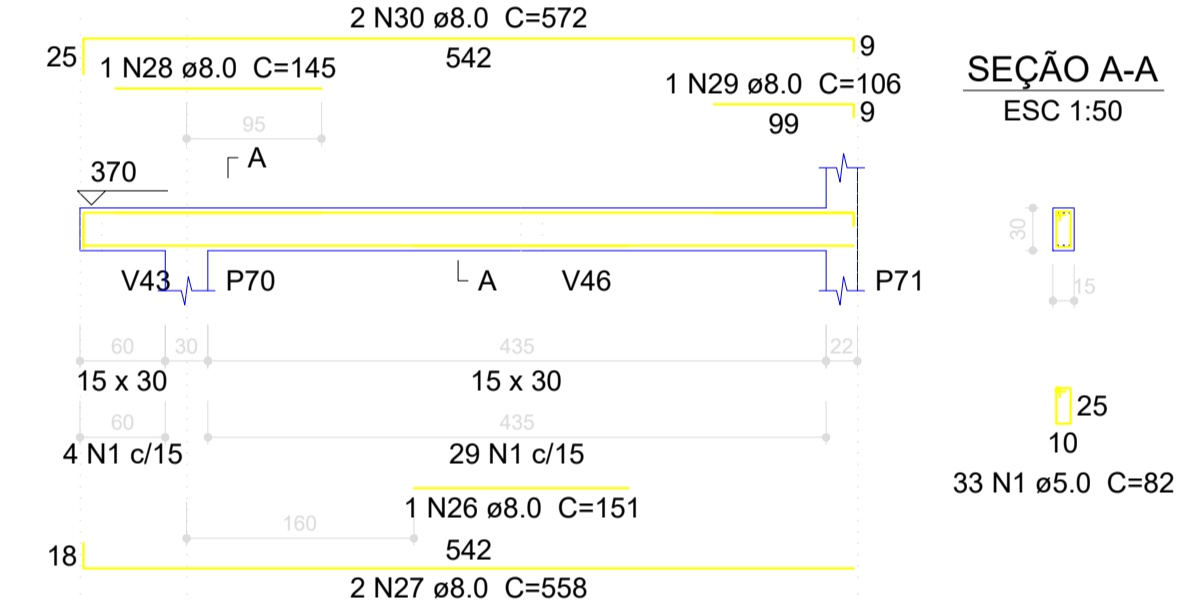
V24
ESC 1:50



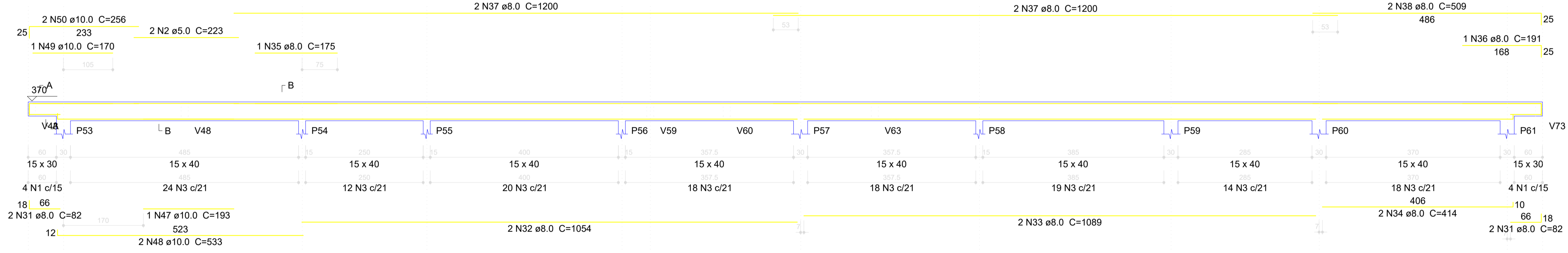
V25
ESC 1:50



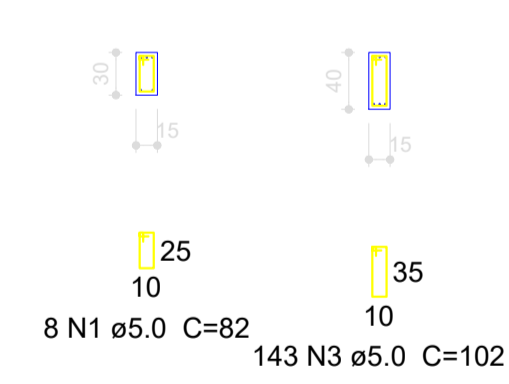
V28
ESC 1:50



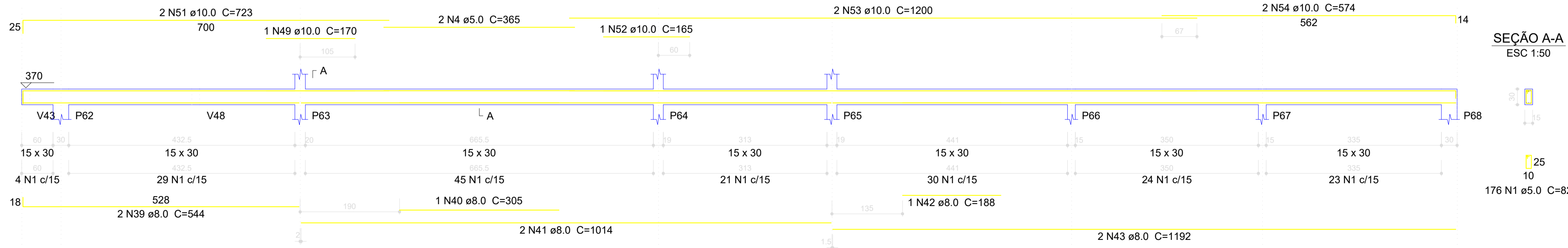
V26
ESC 1:50



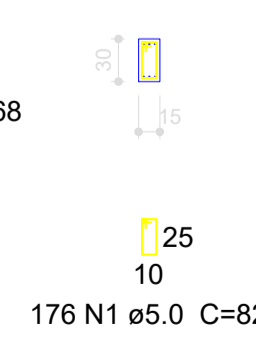
SEÇÃO A-A ESC 1:50 SEÇÃO B-B ESC 1:50



V27
ESC 1:50



SEÇÃO A-A ESC 1:50



Resumo do aço

AÇO	DIAM (mm)	C.TOTAL (m)	PESO + 10 % (kg)
CA50	8.0	446	193.6
CA60	10.0	72.7	49.3
CA60	5.0	589.8	100
PESO TOTAL (kg)			
CA50		242.9	
CA60		100	

Volume de concreto (C-30) = 5.73 m³
Área de forma = 93.94 m²

00	30	06	2022	EMISSÃO INICIAL	AUTOR	VERIFIC.
REV. Nº	DATA	MES	ANO	DESCRIÇÃO DAS REVISÕES:		
CLIENTE: SECRETARIA MUNICIPAL DE SAÚDE DE BALSAS						
OBRA: CENTRO AMBULATORIAL						
TÍTULO: PROJETO ESTRUTURAL PAVIMENTO TERREO VICAS - FORMAS E ARMADURAS						
DESENHO: 1:100 DATA: 30/06/2022 RESPONSÁVEL TÉCNICO: JOSE CASSIO ALVES LIMA - CREA/MA REG. Nº 111697653-4						
PLANTAS: 1:100 VERIF.:						

ESTR-13

REV. Nº 00

Nº 18/2022-ESTR-13-000

PREFEITURA DE BALSAS